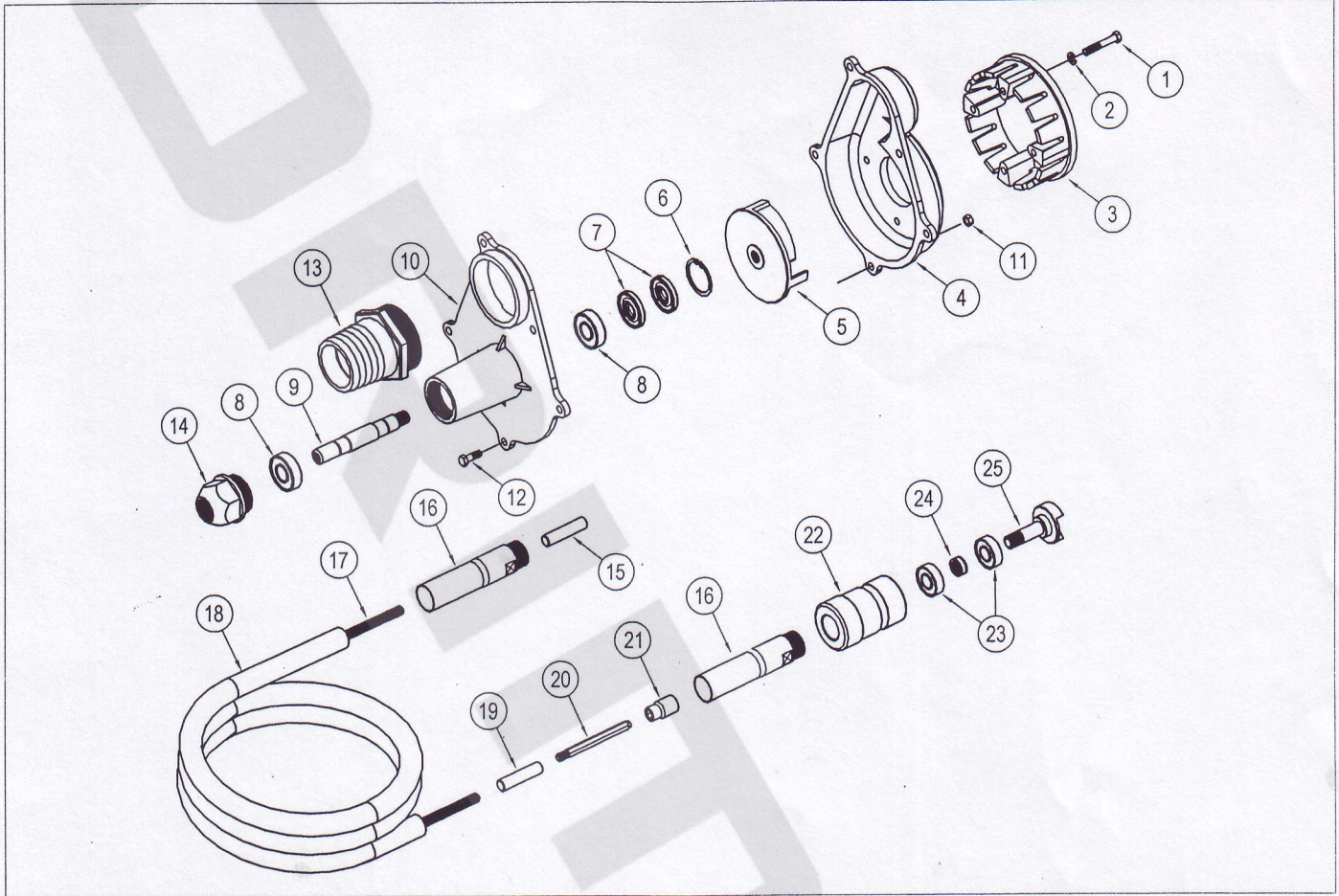


**PART LIST FOR SUBMERSIBLE PUMP JHIP3S (7612) (Phase)**



7610-501 (Pump Head Assembly)			
NO	PART NO	DESCRIPTION	QTY
1	4234-05036	Hex Bolt (BLK) BSW 5/16" X 2 1/4"L	4
2	4913-00008	Spring Washer STL Plain M8	4
3	7610-003	Pump Base	1
4	7610-004	Middle Body	1
5	7610-005	Impeller	1
6	4900-10048	Circlip B48	1
7	4700-20477	Oil Seal (TC 20 x 47 x 7)	2
8	4102-06204	Bearing 6204-2RS	2
9	7610-009	Pump Shaft	1
10	7610-010	Upper Body	1
11	4334-00005	M.S.Nut (BLK) 5/16"	5
12	4234-05016	Hex Bolt,MS4.6,BSW 5/16" X 1"L	5
13	7610-013	Pump Output	1

NO	PART NO	DESCRIPTION	QTY
14	7610-014	Pump Nut	1
15	4912-00012	Shaft Joint A2	1
16	4901-00001	End Casing	1
17	4914-11350	Flexible Shaft 13MM X 5.1M	1
18	4915-13250	Outer Casing 32MM X 4.9M	1
19	4912-00014	Shaft Joint A4	1
20	4904-50006	Hexagonal End Shank	1
4905-521 (Hose Connector Assembly)			
NO	PART NO	DESCRIPTION	QTY
21	4903-50006	Hexagonal End Cap	1
22	4905-00021	Hose Connector	1
23	4102-06203	Bearing (6203 2RS)	2
24	7400-023	Bush	1
25	4911-01765	Shaft Coupling	1

\*\*Feature and Design are subjected to change without prior notice.