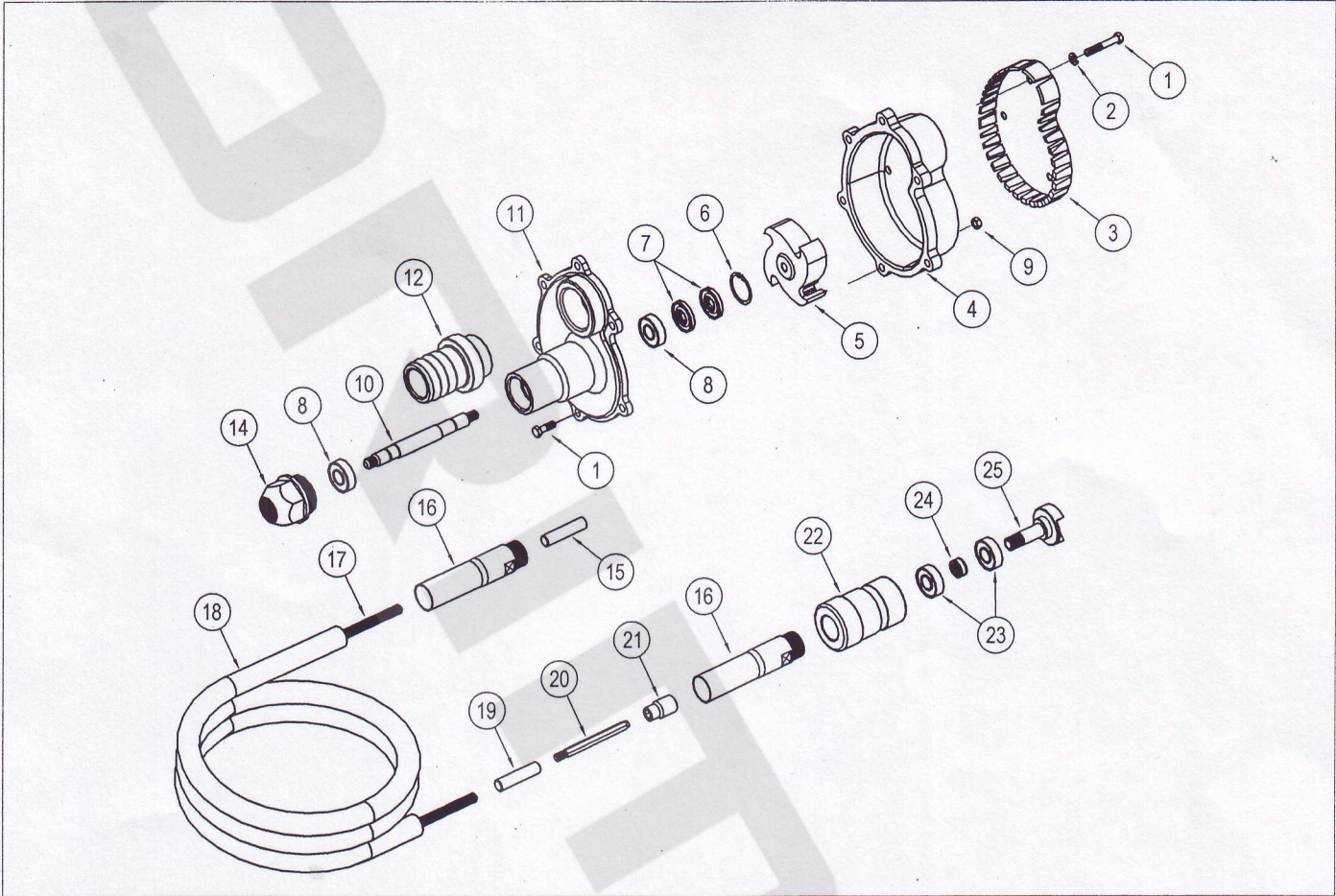


PART LIST FOR SUBMERSIBLE PUMP JHIP2S (7607) (Probe)



7605-501 (Pump Head Assembly)			
NO.	PART NO.	DESCRIPTION	QTY.
1	4234-05020	Hex Bolt (BLK) BSW 5/16" X 1.1/4"L	9
2	4913-00008	Spring Washer STL Plain M8	3
3	7605-003	Pump Base	1
4	7605-004	Middle Body	1
5	7605-005	Impeller	1
6	4900-10040	Circlip B40	1
7	4700-17407	Oil Seal (TC 17 x 40 x 7)	2
8	4102-06203	Bearing 6203-2RS	2
9	4334-00005	M.S.Nut (BLK) 5/16"	6
10	7605-010	Pump Shaft	1
11	7605-011	Upper Body	1
12	7605-012	Pump Output	1
14	7605-014	Pump Nut	1

NO.	PART NO.	DESCRIPTION	QTY.
15	4912-00016	Shaft Joint A6	1
16	4901-00001	End Casing	2
17	4914-11350	Flexible Shaft 13MM X 5.1M	1
18	4915-13250	Outer Casing 32MM X 4.9M	1
19	4912-00014	Shaft Joint A4	1
20	4904-50006	Hexagonal End Shank	1
4905-521 (Hose Connector Assembly)			
NO.	PART NO.	DESCRIPTION	QTY.
21	4903-50006	Hexagonal End Cap	1
22	4905-00021	Hose Connector	1
23	4102-06203	Bearing (6203 2RS)	2
24	7400-023	Bush	1
25	4911-01765	Shaft Coupling	1

**Feature and Design are subjected to change without prior notice.