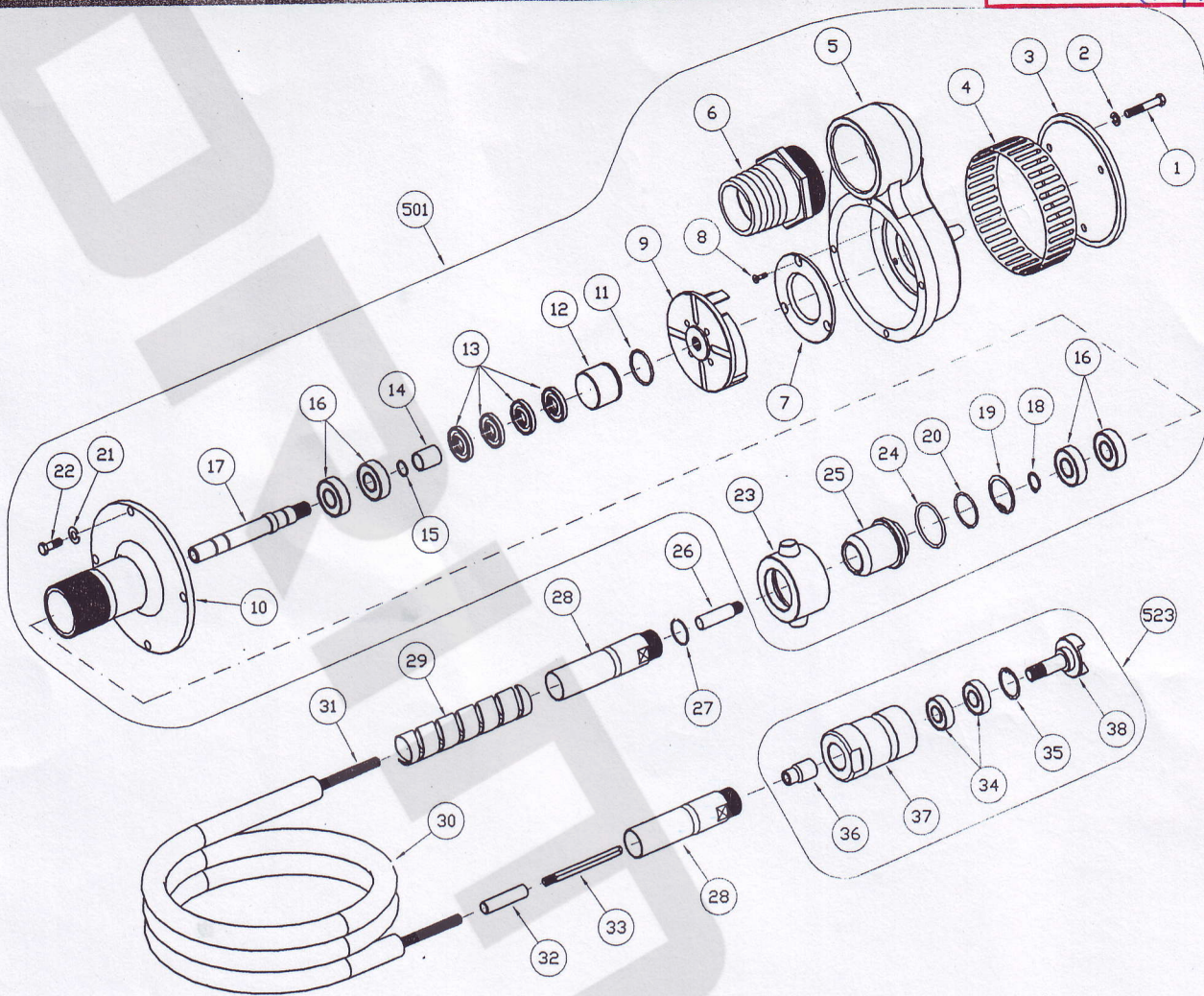


PART LIST FOR SUBMERSIBLE PUMP HP80 (7630)

Export Sales
(Proebe)



No.	Part no.	Description	Qty	Rem.
501	7630-501	Pump Head Assembly)	1	
26	4912-00006	Shaft Joint B6	1	
27	4908-18029	O-Ring 1.8x29	1	
28	4901-00002	End Casing	2	
29	4921-00020	Spring Liner	1	

7630-501 (PUMP HEAD ASSEMBLY)

No.	Part no.	Description	Qty	Rem.
1	4211-08050	Hex Bolt HT8.8 Zinc M8x50L	3	
2	4913-10008	Spring Washer STL ZP M8	3	
3	7630-003	Filter Cover	1	
4	7630-004	Filter	1	
5	7630-008	Middle Body	1	
6	7610-013	Pump Output	1	
7	7630-007	Side Plate	1	
8	4431-06012	Soc CSK Cap Scr M6x12L	3	
9	7630-010	Impeller	1	
10	7630-019	Upper Body	1	
11	4908-20042	O-Ring 2.0x42	1	
12	7630-012	Oil Seal Holder	1	
13	4700-25387	Oil Seal TC 25x38x7 (NOK)	4	

4905-523 (HOSE CONNECTOR ASSEMBLY)

No.	Part no.	Description	Qty	Rem.
34	4102-06004	Bearing 6004-2RS (Grade 3)	2	
35	4900-10044	Circlip B44	1	
36	4903-00010	Hexagonal End Cap	1	

No.	Part no.	Description	Qty	Rem.
30	4915-13255	Outer Casing 32MM x 5.5M	1	
31	4914-11355	Flexible Shaft 13MM x 5.5M	1	
32	4912-00005	Shaft Joint B5	1	
33	4904-00010	Hexagonal End Shank	1	
523	4905-523	Hose Connector Assembly	1	

No.	Part no.	Description	Qty	Rem.
14	7630-014	Inner Spacer	1	
15	4908-20015	O-Ring 2.0x15	1	
16	4004-06204	Bearing 6204ZZ (Grade 1)	4	
17	7630-017	Pump Shaft	1	
18	4900-00020	Circlip A20	1	
19	4900-10048	Circlip B48	1	
20	4908-30053	O-Ring 3.0x53	1	
21	4213-10010	Spring Washer STL ZP M10	4	
22	4211-10025	Hex Bolt HT8.8 Zinc M10x25L	4	
23	7625-023	Lock Nut	1	
24	4908-25043	O-Ring 2.5x43	1	
25	7630-027	Hose Coupling	1	

No.	Part no.	Description	Qty	Rem.
37	4905-00023	Hose Connector	1	
38	4911-02065	Shaft Coupling	1	