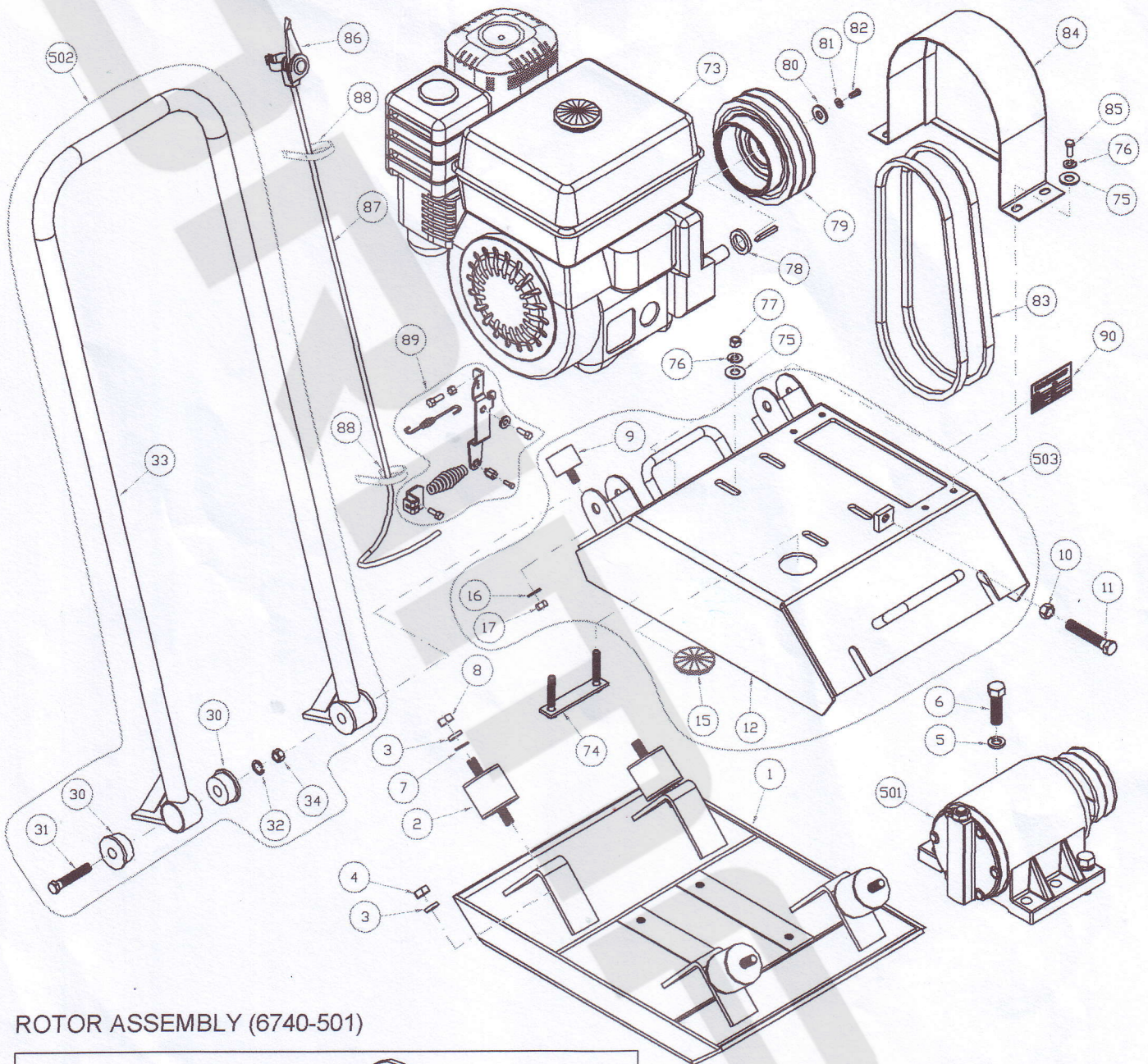
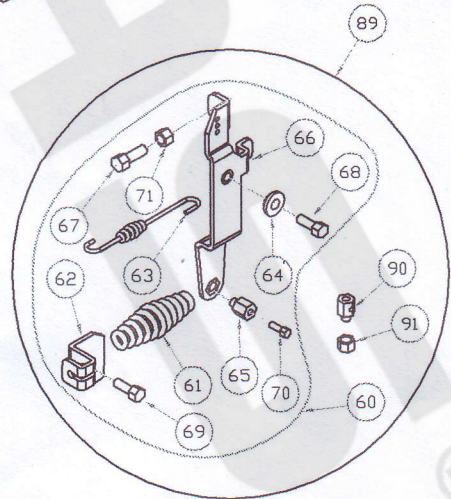
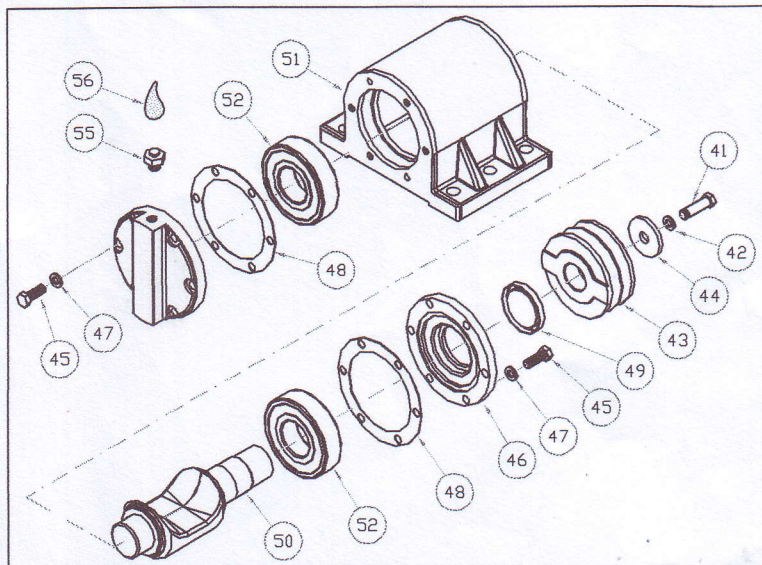


## PART LIST FOR PLATE COMPACTOR YP80 (6740)



### ROTOR ASSEMBLY (6740-501)



\*\*Feature and Design are subjected to change without prior notice.

PL^6740^3^03

**PART LIST FOR PLATE COMPACTOR YP80 (6740)**

**PLATE COMPACTOR ASSEMBLY (6740-500)**

No.	Part no.	Description	Qty.	Rem.
1	6740-001	Compactor Base	1	
2	6740-002	Rubber Mounting For YP80	4	
3	4913-60007	Spring Washer ZP 7/16"	8	
4	4313-00007	H.T.Nut Zinc UNC 7/16"	4	
501	6740-501	Rotor Assembly	1	
5	4913-10012	Spring Washer ZP M12	6	
6	4211-12045	Hex Bolt M12x45L	6	

No.	Part no.	Description	Qty.	Rem.
7	4902-60007	Flat Washer ZP 7/16"	4	
8	4363-00007	Nylon Nut 7/16" UNC	4	
10	4311-00010	Hex Nut ZP M10	1	
11	4211910045	Hex Bolt M10x45 (GI,FULL)	1	
502	6740-502	Handle Assembly	1	
503	6740-503	Engine Mounting Frame Assembly	1	

**PLATE COMPACTOR ASSEMBLY FOR DIESEL ENGINE**

No.	Part no.	Description	Qty.	Rem.
1	6740-001	Compactor Base	1	
2	6740-002	Rubber Mounting For YP80	4	
3	4913-60007	Spring Washer ZP 7/16"	8	
4	4313-00007	H.T.Nut Zinc UNC 7/16"	4	
501	6740-501	Rotor Assembly	1	
5	4913-10012	Spring Washer ZP M12	6	
6	4211-12045	Hex Bolt M12x45L	6	

No.	Part no.	Description	Qty.	Rem.
7	4902-60007	Flat Washer ZP 7/16"	4	
8	4363-00007	Nylon Nut 7/16" UNC	4	
10	4311-00010	Hex Nut ZP M10	1	
11	4211910045	Hex Bolt M10x45 (GI,FULL)	1	
502	6740-502	Handle Assembly	1	
504	6740-505	Engine Mounting Frame Assembly(Diesel)	1	

**ROTOR ASSEMBLY (6740-501)**

No.	Part no.	Description	Qty.	Rem.
41	4201-12025	Hex Bolt Plain M12x25L	1	
42	4913-00012	Spring Washer M12	1	
43	6740-043	Pulley (A2x3.5")	1	
44	4902151345	Washer 4.5x13x45	1	
45	4201-08025	Hex Bolt M8x25L	12	
46	6740-046	Rotor Housing Cover (Front)	1	
47	4913-00008	Spring Washer M8	12	
48	6740-048	Gasket (0.8xD90x121mm)	2	

No.	Part no.	Description	Qty.	Rem.
49	4700-40558	Oil Seal (TC 40x55X8)	1	
50	6740-050	Rotor Shaft	1	
51	6740-051	Rotor Housing	1	
52	4113-06308	Bearing 6308 C3	2	
53	6740-053	Rotor Housing Cover (Rear)	1	
55	6740-055	Breather Bolt Assembly	1	
56	4931-00140	Gear Oil SAE 140	200ml	

**HANDLE ASSEMBLY (6740-502)**

No.	Part no.	Description	Qty.	Rem.
30	6740-030	Rubber Bushing For YP80	4	
31	4244-08040	Hex Bolt BSW 1/2"x2 1/2"	2	
32	4913-60008	Spring Washer ZP 1/2"	2	
33	6740-033	Handle Bar	1	
34	4344-00008	M.S.Nut Zinc 1/2"	2	

**ENGINE MOUNTING FRAME ASSEMBLY (6740-503)**

No.	Part no.	Description	Qty.	Rem.
9	6740-009	Rubber Absorber YP80	2	
12	6740-012	Engine Mounting Frame	1	
15	6740-015	Rubber Cover YP80	1	
16	4913-10010	Spring Washer ZP M10	2	
17	4313-00006	Hex Nut ZP UNC 3/8"	2	

**ENGINE MOUNTING FRAME ASSEMBLY (DIESEL) (6740-505)**

No.	Part no.	Description	Qty.	Rem.
19	6740-009	Rubber Absorber YP80	2	
14	6740-014	Engine Mounting Frame CF170F	1	
15	6740-015	Rubber Cover YP80	1	
16	4913-10010	Spring Washer ZP M10	2	
17	4313-00006	Hex Nut ZP UNC 3/8"	2	

**PULL BACK SPRING ASSEMBLY (4921-00001)**

No.	Part no.	Description	Qty.	Rem.
61	4921-00000	Pull Back Spring	1	
62	4921-03000	Support Plate	1	
63	4921-05000	Tension Spring	1	
64	4921-06000	Collar	1	
65	4921-00002	Pull Back Nut	1	
66	4921-04000	Pivot Plate	1	

No.	Part no.	Description	Qty.	Rem.
67	4502-05030	Cross R.Pan HD Scr Zp M5x30L	1	
68	4211-06016	Hex Bolt Zp M6 x 16L	1	
69	4211-06010	Hex Bolt Zp M6 x 10L	1	
70	4211-04012	Hex Bolt Zp M4 x 12L	1	
71	4311-00005	Hex Nut Zp M5	1	

\*\*Feature and Design are subjected to change without prior notice.

Date: 11-Feb-14

Page 2 of 3

PL^6740^3^03

**PART LIST FOR PLATE COMPACTOR YP80 (6740)****All For C/W Engine**

No.	Part no.	Description	Qty.	Rem.
73	refer table (i)	<b>For C/W Engine</b>	1	
74	6740-008	Engine Bracket Bolt	2	
75	4902-10008	Flat Washer ZP M8	8	
76	4913-10008	Spring Washer ZP M8	8	
77	4311-00008	Hex Nut ZP M8	4	
78	6740-059	Engine Collar	1	
79	refer table part (a)	<b>Clutch Pulley For C/W Engine</b>	1	
80	refer table part (b)	<b>Flat Washer For C/W Engine</b>	1	
81	refer table part (c)	<b>Spring Washer For C/W Engine</b>	1	

No.	Part no.	Description	Qty.	Rem.
82	refer table part (d)	<b>Hex Bolt For C/W Engine</b>	1	
83	refer table part (e)	<b>V-belt For C/W Engine</b>	2	
84	refer table part (f)	<b>Belt Cover For C/W Engine</b>	1	
85	4211-08016	Hex Bolt M8x16L	4	
86	refer table part (g)	<b>Throttle Lever For C/W Engine</b>	1	
87	4916-01156	Throttle Cable	1	
88	4910-00006	Cable Tie L8*200MM W5MM White	2	
89	refer table part (h)	<b>Pull Back Spring For C/W Engine</b>	1	
90	4932-10030	Serial Plate YP80	1	

**REFERENCE FOR C/W DIFFERENT ENGINE**

(i)	No.	Part No.	Description	Qty	LIFAN ENGINE	HONDA ENGINE	ROBIN ENGINE	B&S ENGINE	JINCO DIESEL
					5901 LF168F	5028A GX160QD1(CH)	5131C EY20DU	5980 I/C 5HP	5860 JDE170FK
(a)	79	4732114019	Clutch Pulley 19mm For Plate Compactor	1	✓	✓	✓	✓	✓
		4732114020	Clutch Pulley 20mm For Plate Compactor						
(b)	80	4902131030	Flat Washer Stl Zp 3 X 10 X 30	1	✓	✓	✓	✓	
(c)	81	4913-10008	Spring Washer Zp M8	1	✓	✓			
		4913-10010	Spring Washer Zp M10			✓	✓	✓	
(d)	82	4212-05016	Hex Bolt, Zinc UNF 5/16" x 1"L	1	✓	✓			
		4212-06016	Hex Bolt, Zinc UNF 3/8" x 1"L			✓	✓	✓	
		4211-08025	Hex Bolt M8x25L						
(e)	83	4918-00030	V-Belt (A-30)	2	✓	✓	✓	✓	
		4918-00032	V-Belt (A-32)						✓
(f)	84	6740-026	Belt Cover	1	✓	✓	✓	✓	
		6470-027	Belt Cover DY23						✓
(g)	86	4917-00010	Throttle Lever -L/H (Plastic)	1	✓	✓		✓	
		4917-00020	Throttle Lever -R/H (Plastic)			✓			✓
(h)	60	4921-00001	Pull Back spring Assembly	1			✓		
		4921-00000	Pull Back Spring		✓	✓		✓	✓
		4211-04012	Hex Bolt M4x12		✓	✓		✓	✓
		4921-00003	Pull Back Nut		✓	✓		✓	✓
		4361-00006	Nylon Nut M6		✓	✓		✓	✓

\*\*Feature and Design are subjected to change without prior notice.

Date: 11-Feb-14

Page 3 of 3

PL^6740^3^03

