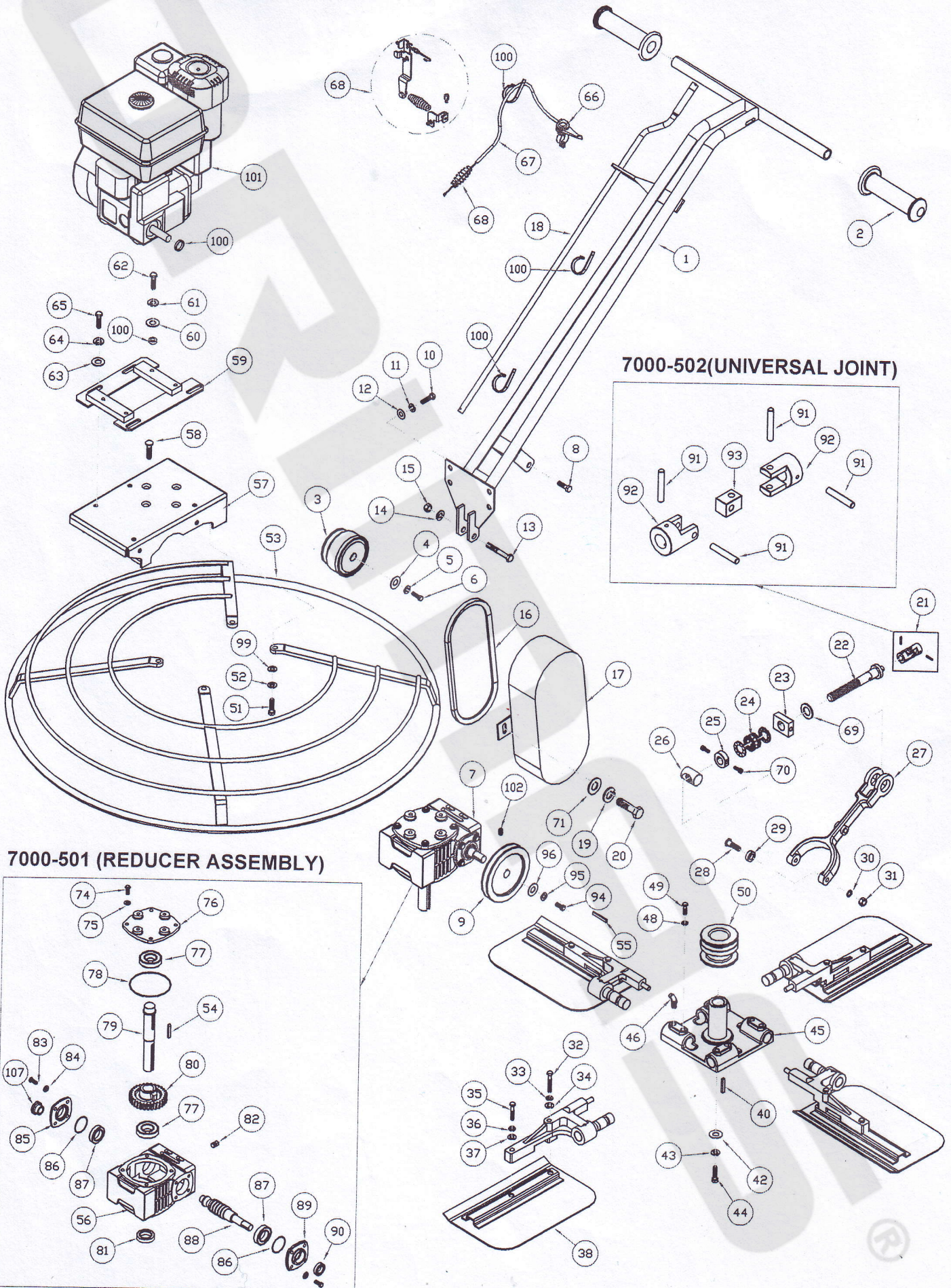


**PART LIST FOR POWER TROWEL YPT910**

Fig. 14/4/15

To = Phoebe (export)



**7000-501 (REDUCER ASSEMBLY)**

**7000-502 (UNIVERSAL JOINT)**

\*\*Feature and Design are subjected to change without prior notice.

Hgn.  
M/4/15.**PARTS LIST FOR POWER TROWEL YPT910 (7000)****POWER TROWEL ASSEMBLY (7000-500)**

No.	Part no.	Description	Qty.
1	7000-001	Handle	1
2	4920-00000	Rubber handle grip	2
4	4902131030	Washer 3 x 10 x 30	1
7	7000-501	Reducer	1
8	7000-008	Holder bolt	2
9	4711-12518	Pulley (A 1 x 5, ID 18)	1
10	4211-10025	Bolt Zn (M10 x 25)	4
11	4913-10010	Spring washer Zn (M10)	4
12	4902-10010	Washer Zn (M10)	4
13	4211-10055	Bolt Zn (M10 x 55)	1
14	4902-10010	Washer Zn (M10)	1
15	4361-00010	Nylon Nut Zn (M10)	1
17	7000-017	Pulley Cover	1
18	7000-018	Shifter handle	1
19	4913-10010	Spring Washer Zn (M 10)	2
20	4211-10020	Bolt Zn (M10 x 20)	2
21	7000-502	Universal joint	1
22	7000-022	Slide bolt	1
23	7000-023	Holder	1
24	4100-51104	Bearing (51104)	1
25	7000-025	Stopper	1
26	7000-026	Slide nut	1
27	7000-027	Slide arm	1
28	7000-028	Roller bolt	2
29	7000-029	Roller	2
30	4913-10010	Spring washer Zn (M10)	2
31	4311-00010	Nut (M10)	2
32	4211-10070	Bolt Zn (M10 x 70)	4
33	4913-10010	Spring washer Zn (M10)	4
34	4902-10010	Washer Zn (M10)	4
35	4211-10040	Bolt Zn (M10 x 40)	4

No.	Part no.	Description	Qty.
36	4913-10010	Spring Washer Zn (M10)	4
37	4902-10010	Washer Zn (M10)	4
38	7000-038	Blade	4
39	7000-039	Blade arm	4
40	4906-50552	Key (5/16" x 3 1/4")	1
42	4902151345	Washer (4.5 x ID13 x 45mm)	1
43	4913-10012	Spring Washer Zn (M12)	1
44	4205-12025	Bolt 10.9 (M12 x 25)	1
45	7000-045	Blade base	1
46	4907-60002	Nipple 1/8"-45	4
48	4913-10010	Spring washer Zn (M10)	4
49	7000-049	Lock bolt	4
50	7000-050	Slide pulley	1
51	4211-10030	Bolt Zn (M10 x 30)	4
52	4913-10010	Spring washer Zn (M10)	4
53	7000-053	Frame	1
55	4906-50312	Key (3/16" x 3 1/4")	1
57	7000-057	Reducer base	1
58	4431-10030	Soc CSK Cap HT12.9 (M10 x 30L)	4
59	7000-059	Engine base	1
63	4902-10010	Washer Zn ( M10)	4
64	4913-10010	Spring washer Zn (M10)	4
65	4211-10025	Bolt Zn (M10 x 25)	4
69	7000-069	Collar	1
70	4411-06016	Cap screw Zn (M6 x 16)	2
71	4902-10010	Washer Zn ( M10)	2
94	4211-08020	Bolt Zn (M8 x 20)	1
95	4913-10008	Spring washer Zn (M8)	1
97	4902-10010	Washer Zn ( M10)	4
99	4932-00001	Safety label belt	1
102	4451-08012	Set screw (M8 x 12)	1

**7. REDUCER ASSEMBLY (7000-501)**

No.	Part no.	Description	Qty.
54	4906-50526	Key(5/16" x 1 5/8")	1
56	7000-056	Reduce Housing	1
74	4201-08025	Bolt Black (M 8 x 25)	4
75	4913-00008	Spring Washer (M8)	4
76	7000-076	Reducer rear cover	1
77	4000-30206	Bearing (30206 JR)	2
78	4908-20110	O-ring (2.0 x 110)	1
79	7000-079	Reducer Shaft	1
80	7000-080	Worm Wheel	1
81	4700305011	Oil Seal ( 30 x 50 x 11)	1
82	4928-04019	Plug ( PF 1/4 -19)	2

No.	Part no.	Description	Qty.
83	4201-08025	Bolt (M8 x 25)	8
84	4913-00008	Spring Washer (M8)	8
85	7000-085	Reducer Right Cover	1
86	4908-15046	O-ring (1.5 x 46)	2
87	4000-07204	Bearing ( 7204 )	2
88	7000-088	Worm Gear Shaft	1
89	7000-089	Reducer Left Cover	1
90	4700-20357	Oil Seal ( 20 x 35 x 7)	1
105	4931-00090	Gear Oil SAE 90 (Liter)	0.7
106	4902-81019	Shim Washer 1-3/16"	4
107	6600-029	Oil Gauge	1

**21. UNIVERSAL JOINT (7000-502)**

No.	Part no.	Description	Qty.
91	4909-10525	Dowel Pin	4
92	7000-092	Joint Coupling	2
93	7000-093	Joint Nut	1

*Jegor*  
14/4/15.

## PARTS LIST FOR POWER TROWEL YPT910 (7000)

### PARTS C/W ENGINE (\*ITEM 101)

No.	Part no.	Description	Qty.
3	refer table part (a)	Clutch pulley	1
5	refer table part (b)	Spring Washer	1
6	refer table part (c)	Hex Bolt	1
16	refer table part (d)	V-belt	1
60	4902-10008	Washer Zn (M8)	4
61	4913-10008	Spring washer Zn (M8)	4
62	refer table part (e)	Bolt for engine (M8)	4
66	refer table part (f)	Throttle lever plastic	1
67	4916-01524	Throttle cable	1
68	refer table part (g)	Pull back spring	1
96	4902131030	Washer 3 x 10 x 30	1
98	4932-10020	Serial plate YTP 910	1
100	refer table part (h)	Optional	1
101	refer table below	Engine	1

	Part No.	Description	Qty	LIFAN	B & S	ROBIN
				5901 LF168F(Q)	5980 I/C 5HP	5131 EY20DU
(a)	4731109019	Clutch Pulley 19MM	1	✓	✓	✓
	4731109020	Clutch Pulley 20MM				
(b)	4913-10008	Spring Washer M8	1	✓		
	4913-10010	Spring Washer M10			✓	✓
(c)	4212-05020	Hex Bolt, Zinc UNF 5/16" x 1-1/2"L	1	✓		
	4212-06024	Hex Bolt, Zinc UNF 3/8" x 1-1/2"L			✓	✓
(d)	4918-00029	V-belt (A-29)	1		✓	✓
	4918-00030	V-belt (A-30)		✓		
(e)	4211-08040	Bolt Zn (M8 x 40)	4		✓	✓
	4211-08045	Bolt Zn (M8 x 45)		✓		
(f)	4917-00010	Throttle Lever - L/H (Plastic)	1	✓		
	4917-00020	Throttle Lever - R/H (Plastic)			✓	✓
(g)	4921-00000	Pull Back Spring	1	✓	✓	
	4921-00003	Pull Back Nut				
	4361-00006	Nylon Lock Nut M6				
	4211-04012	Bolt (M4 x 12)				
	4921-03000	Support Plate				
	4921-06000	Collar			✓	
	4921-04000	Pivot Plate				✓
	4921-00001	Pull Back Spring Assembly			✓	
(h)	4910-00006	Cable Tie	3			
	6740-059	Engine Collar	1	✓	✓	✓
	7010-092	Spacer	4	✓		