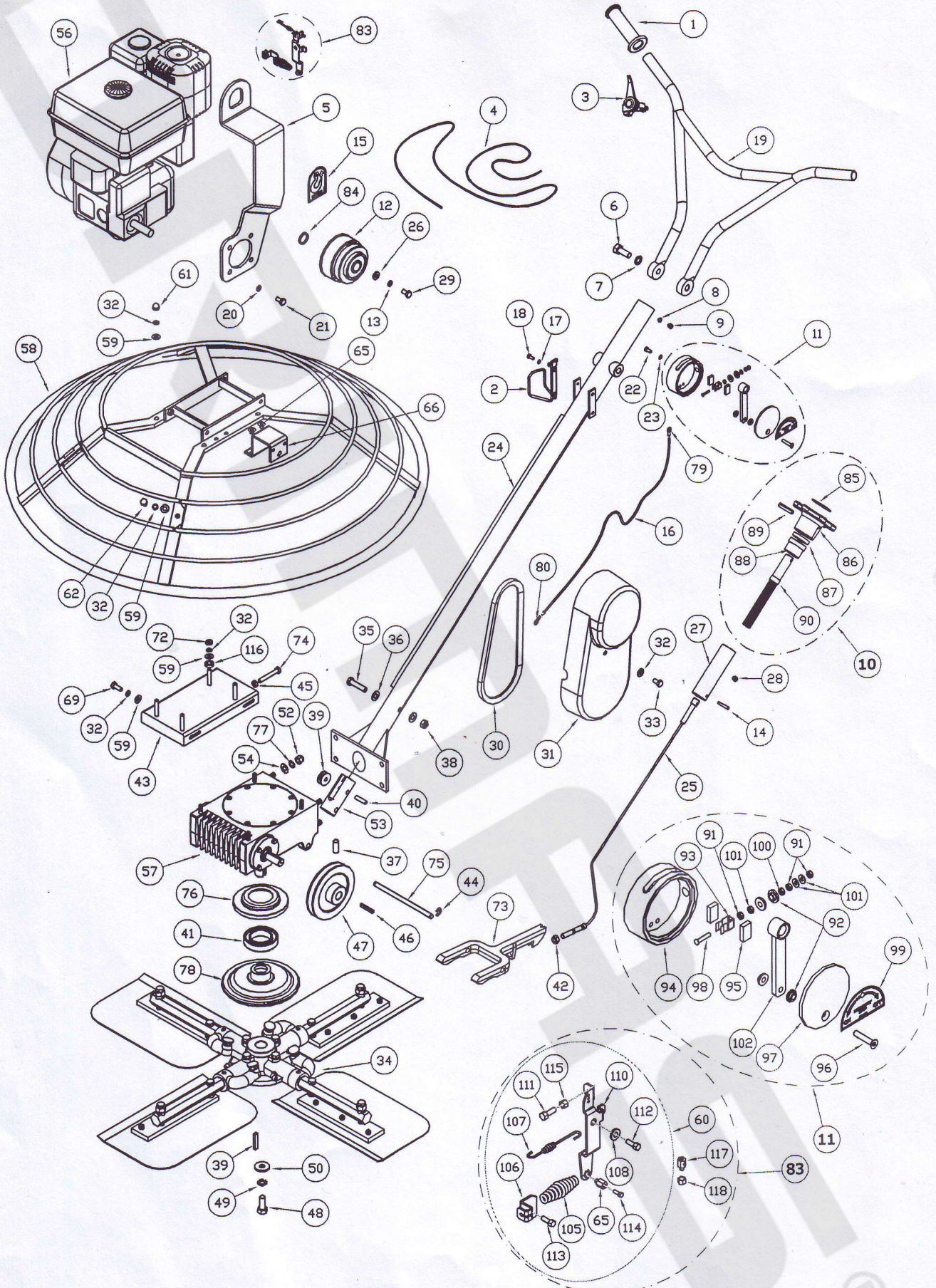


PART LIST FOR POWER TROWEL YPT34/YPT36/YPT40/YPT46



**Feature and Design are subjected to change without prior notice.

Date: 16-Aug-14

PART LIST FOR POWER TROWEL YPT34/YPT36/YPT40/YPT46

No.	Part no.	Description	Qty.	Rem.
1	4920-0000	Rubber Handle Grip	2	
2	4930-04001	Bottle Holder	1	
6	4211-10030	Hex Bolt Zp M10 x 30L	2	
7	4913-10010	Spring Washer Zp M10	2	
8	4913-10006	Spring Washer ZP M6	1	
9	4411-06010	Soc Cap HT12.9 Zp M6 x 10L	1	
10	refer table (i)	Hand Wheel Assembly	1	
11	refer table (ii)	Safety Switch Assembly	1	
14	4909-00535	SLP 5 x 35L	1	
15	4932-00000	Lifting Label	1	
16	4926-11028	Cable 28/0.26 x 1C	1500MM	
17	4913-10005	Spring Washer Zp M5	2	
18	4211-05010	Hex Bolt Zp M5 x 10L	2	
19	7010-019	Handle	1	
22	4211-06016	Hex Bolt Zp M6 x 16L	2	
23	4913-10006	Spring Washer Zp M6	2	
24	7010-024	Handle Tube	1	
25	7010-025	Wire Cable Set	1	
27	7010-027	Silde Block	1	
28	7010-028	Cap Screw	1	
32	4913-10008	Spring Washer Zp M8	16	
33	4211-08016	Hex Bolt Zp M8 x 16L	3	
34	<i>*Refer to Part List for 34"/36"/40"/46" Spider Assembly (7010-504/7010-513/7010-505/7010-516)</i>			
35	4211-10055	Hex Bolt Zp M10 x 55L	1	
36	4902-10010	Flat Washer Zp M10	2	
37	4451-08012	Soc HD Set Scr Plain M8 x 12L	1	
38	4361-00010	Nylon Nut M10	1	
39	4906-18725	Key 8 x 7 x 25L	1	
40	4909-10830	Dowel Pin Zp M8 x 30L	1	

No.	Part no.	Description	Qty.	Rem.
41	4102-06009	Bearing 6009 2RS	1	
42	4361-00010	Nylon Nut M10	1	
44	4900-01008	E-Clip STL Zp M8	2	
45	4311-00008	Hex Nut HT8.8 Zp M8	1	
46	4906-50320	Key 3/16" x 1-1/4"	1	
47	4711-12518	Pulley A1 x 5", ID 18	1	
48	4205-12030	Hex Bolt HT10.9 Plain M12 x 30L	1	
49	4913-10012	Spring Washer Zp M12	1	
50	4902053412	Flat Washer Plain 4.5 x 32 x 12	1	
51	7010-051	Roller	1	
52	4371-00010	Dome Nut Zp M10	4	
53	7010-053	Roller Support	1	
54	4902-10010	Flat Washer Zp M10	4	
57	<i>*Refer to Part List for Reducer Assembly (7010-503)</i>			
59	4902-10008	Flat Washer Zp M8	13	
61	4371-00008	Cap Nut Zp M8	4	
62	4520-08016	Wing Bolt Zp M8 x 16L	1	
65	4436-08012	Soc CSK Cap Scr HT12.9 M8 x 12L	2	
66	refer table (iii)	Pulley Cover Bracket	1	
69	4205-08025	Hex Bolt HT10.9 Plain M8 x 25L	4	
72	4311-00008	Hex Nut Zp M8	4	
73	7010-073	Yoke Arm	1	
74	4211908050	Hex Bolt HT8.8 Zp M8 x 50F	1	
75	7010-075	Yoke Pin	1	
76	7010-076	Plate Cover Bearing	1	
77	4913-10010	Spring Washer Zp M10	4	
78	7010-078	Thrust Plate	1	
79	4927-02002	Insulated Terminal Lug 2.5 x 5.3MM	1	
80	4927-06004	Insulated Terminal Lug 2.5MM	1	

*Guard Ring For (YPT34/YPT36/YPT40/YPT46)

No.	Part no.	Description	Qty.	Rem.
58	7010-008	34" Guard Ring (930mm)	1	
	7010-009	40" Guard Ring (1080mm)		
	7010-010	36" Guard Ring (980mm)		
	7010-011	46" Guard Ring (1230mm)		

(i) Hand Wheel Assembly (7010-500)

No.	Part no.	Description	Qty.	Rem.
85	7010-122	knob Plate	1	
86	7010-059	Hand Wheel	1	
87	4100-51204	Thrust Ball Bearing 51204	1	

No.	Part no.	Description	Qty.	Rem.
88	7010-030	Bush	1	
89	4909-00650	Self Lock Pin M6 x 50L (B)	1	
90	7010-029	Slide Bolt	1	

(ii) Safety Switch Assembly (7010-501)

No.	Part no.	Description	Qty.	Rem.
91	4381-00005	Nut Brass M5	2	
92	7010-153	Stopper Bush	4	
93	7010-154	Brass Clip	1	
94	7010-150	Switch Housing	1	
95	7010-155	Protection Rubber	2	
96	4501-05025	Cross Pan Hd Brass M5 x 25L	1	

No.	Part no.	Description	Qty.	Rem.
97	7010-151	Switch Cover	1	
98	4436-06025	Soc CSK HT12.9 Zp M6 x 25L	1	
99	4932-00002	Label, E-Stop	1	
100	4376-00005	Flange Nut M5	1	
101	4902-90005	Flat Washer Brass M5	3	
102	7010-152	Switch Handle	1	

(iii) Pulley Cover Bracket

No.	Part no.	Description	YPT34	YPT36	YPT40	YPT46	Qty.
66	7010-250	Pulley Cover Bracket	✓	✓	✓		1
	7010-252				✓		

60.Pull Back Spring Assembly (4921-00001)

No.	Part no.	Description	Qty.	Rem.
105	4921-00000	Pull Back Spring	1	
106	4921-03000	Support Plate	1	
107	4921-05000	Tension Spring	1	
108	4921-06000	Collar	1	
109	4921-00002	Pull Back Nut	1	
110	4921-04000	Pivot Plate	1	

No.	Part no.	Description	Qty.	Rem.
111	4502-05030	Cross R.Pan HD Scr Zp M5 x 30L	1	
112	4211-06016	Hex Bolt Zp M6 x 16L	1	
113	4211-06010	hex Bolt Zp M6 x 10L	1	
114	4211-04012	Hex Bolt Zp M4 x 12L	1	
115	4311-00005	Hex Nut Zp M5	1	

**Feature and Design are subjected to change without prior notice.

PART LIST FOR POWER TROWEL YPT34/YPT36/YPT40/YPT46

All For C/W Engine

No.	Part no.	Description	Qty.	Rem.
56	refer table (i)	Engine	1	
3	refer table part (a)	Step Adjust Throttle Lever (RH)	1	
4	4916-01524	Throttle Cable	1	
5	refer table part (b)	Lifting Bar	1	
12	refer table part (c)	Clutch Pulley	1	
13	refer table part (d)	Spring Washer	1	
15	4932-00000	Lifting Label	1	
20	refer table part (e)	Spring Washer	4	
21	refer table part (f)	Hex Bolt	4	

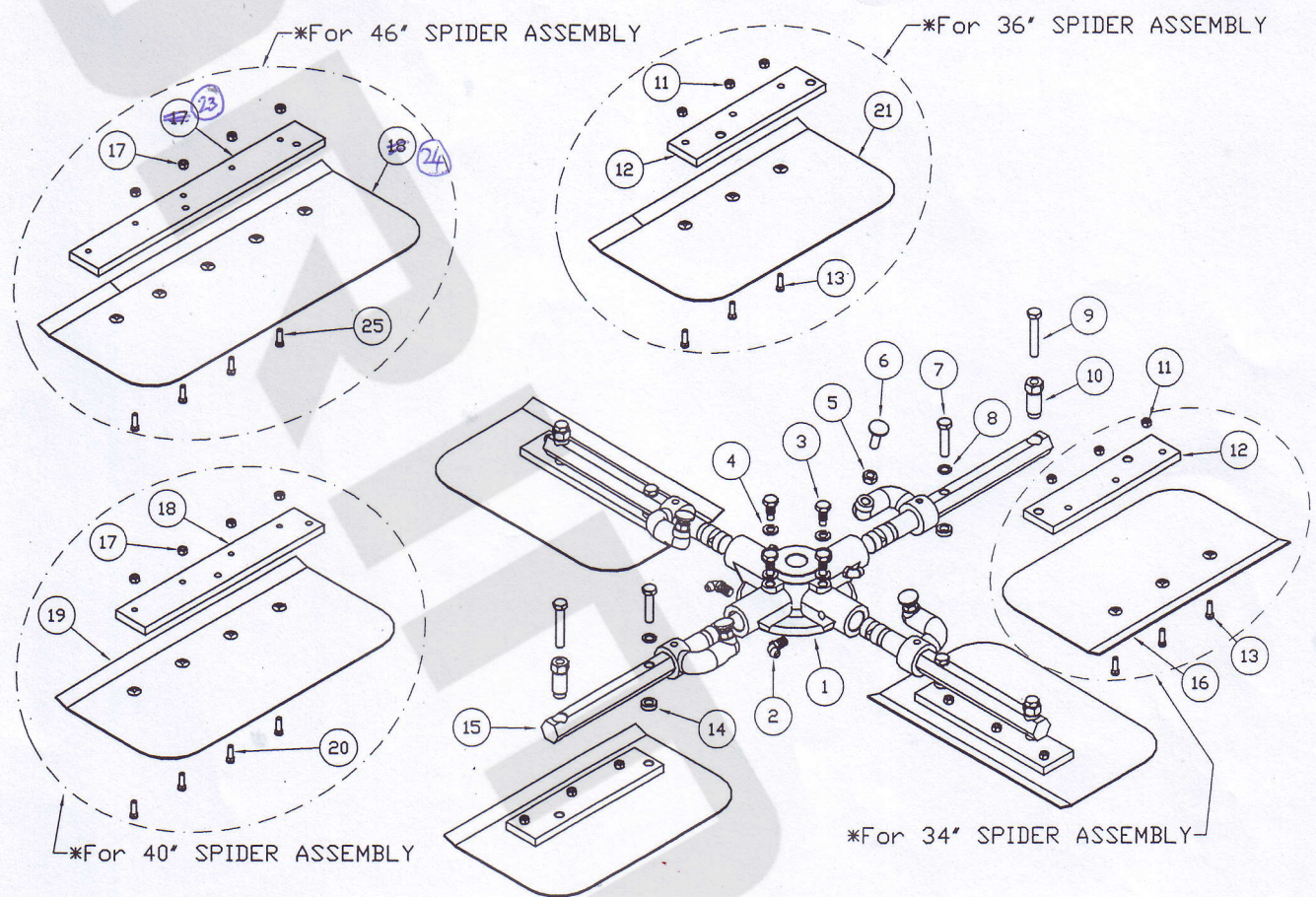
No.	Part no.	Description	Qty.	Rem.
26	refer table part (g)	Flat Washer	1	
29	refer table part (h)	Hex Bolt	1	
30	refer table part (i)	V-Belt	1	
31	refer table part (j)	Belt Cover	1	
43	refer table part (k)	Engine Mounting	1	
83	refer table part (l)	Pull Back Spring	1	
84	refer table part (m)	Engine Collar	4	
116	refer table part (n)	Spacer	4	

REFERENCE FOR C/W DIFFERENT ENGINE

(i)	No.	Part No.	Description	Qty.	HONDA ENGINE			HONDA ENGINE
					EY20DU	EX-17D	EX27D	GX160Q
(a)	3	4917-00021	Step Adjust Throttle Lever (RH)	1	✓	✓	✓	✓
(b)	5	7010-108	Lifting Bar, Short (405MM)	1	✓	✓	✓	✓
		7010-109	lifting Bar, Long (495MM)					
(c)	12	4731109019	Clutch Pulley 19mm	1	✓	✓	✓	✓
		4731109020	Clutch Pulley 20mm					
		4731109025	Clutch Pulley 25mm					
(d)	13	4913-10008	Spring Washer M8	1	✓	✓	✓	✓
		4913-10010	Spring Washer M10					
(e)	20	4913-10008	Spring Washer Zp M8	4	✓	✓	✓	✓
		4913-10010	Spring Washer Zp M10					
(f)	21	4202-05016	Hex Bolt 5/16"x1" UNF	4	✓	✓	✓	✓
		4205-08025	Hex Bolt HT10.9 Plain M8x20L					
		4212-06016	Hex Bolt Zinc UNF 3/8"x1"L					
(g)	26	4902131030	Flat Washer Zp 3 X 10 X 30	1	✓	✓	✓	✓
		4902131127	Flat Washer Zp 3 X 11 X 27					
(h)	29	4202-05016	Hex Bolt 5/6"x1" UNF	1	✓	✓	✓	✓
		4211-08025	Hex Bolt Zp M8 x 25L					
		4212-06016	Hex Bolt Zinc UNF 3/8"x1"L					
(i)	30	4918-00028	V-Belt (A-28)	2	✓	✓	✓	✓
(j)	31	7010-105	Belt Cover	1	✓	✓	✓	✓
		7010-106	Belt Cover DY23					
		7010-107	Belt Cover (Light Beige)					
(k)	43	7010-005	Engine Mounting Plate	1	✓	✓	✓	✓
		7010-007						
(l)	60	4921-00001	Pull Back spring Assembly	1	✓	✓	✓	✓
	105	4921-00000	Pull Back Spring					
	114	4211-04008	Hex Bolt M4x8					
		4211-04012	Hex Bolt M4x12					
	117	4921-00003	Pull Back Nut					
	118	4361-00006	Nylon Nut M6					
-	4211-05010	Hex Bolt M5x10L	✓ (RFC)					
(m)	84	6740-059	Engine Collar	1	✓			
(n)	116	7010-092	Spacer	4	✓ (RFC)			

**Feature and Design are subjected to change without prior notice.

PART LIST FOR 34"/36"/40"/46" SPIDER ASSEMBLY (7010-504/7010-513/7010-505/7010-516)



No.	Part no.	Description	Qty.	Rem.
1	7010-079	Spider	1	
2	4907-60002	Grease Nipple 1/8" BSP 45°	4	
3	7010-083	Lock Bolt	4	
4	4913-10010	Spring Washer M10	8	
5	4311-00010	Hex Nut M10	4	

No.	Part no.	Description	Qty.	Rem.
6	4510-10035	Carriage Bolt M10 x 35L, (Zn)	4	
7	4214-06028	Hex Bolt 3/8" x 1-3/4" (H.T)	4	
9	4214-06036	Hex Bolt 3/8" x 2-1/4" (H.T)	4	
10	7010-095	Adjuster Bolt	4	
14	7010-093	Spacer	4	

*** For 34" SPIDER ASSEMBLY (7010-504)**

No.	Part no.	Description	Qty.	Rem.
11	4361-00006	Nylon Nut M6	12	
12	7010-098	34" Blade Support	4	
13	7010-100	Blade Bolt	12	
15	7010-091	34" Trowel Arm	4	
16	7010-099	34" Combination Blade	4	

*** For 40" SPIDER ASSEMBLY (7010-505)**

No.	Part no.	Description	Qty.	Rem.
15	7010-091	34" Trowel Arm	4	
17	4361-00006	Nylon Nut M6	16	
18	7010-096	40" Blade Support	4	
19	7010-097	40" Combination Blade	4	
20	7010-100	Blade Bolt	16	

*** For 36" SPIDER ASSEMBLY (7010-513)**

No.	Part no.	Description	Qty.	Rem.
11	4361-00006	Nylon Nut M6	12	
12	7010-098	34" Blade Support	4	
13	7010-100	Blade Bolt	12	
15	7010-091	34" Trowel Arm	4	
21	7010-101	36" Combination Blade	4	

*** For 46" SPIDER ASSEMBLY (7010-516)**

No.	Part no.	Description	Qty.	Rem.
15	7010-090	46" Trowel Arm	4	
22	4361-00006	Nylon Nut M6	20	
23	7010-102	46" Blade Support	4	
24	7010-103	46" Combination Blade	4	
25	7010-100	Blade Bolt	20	

**Feature and Design are subjected to change without prior notice.

