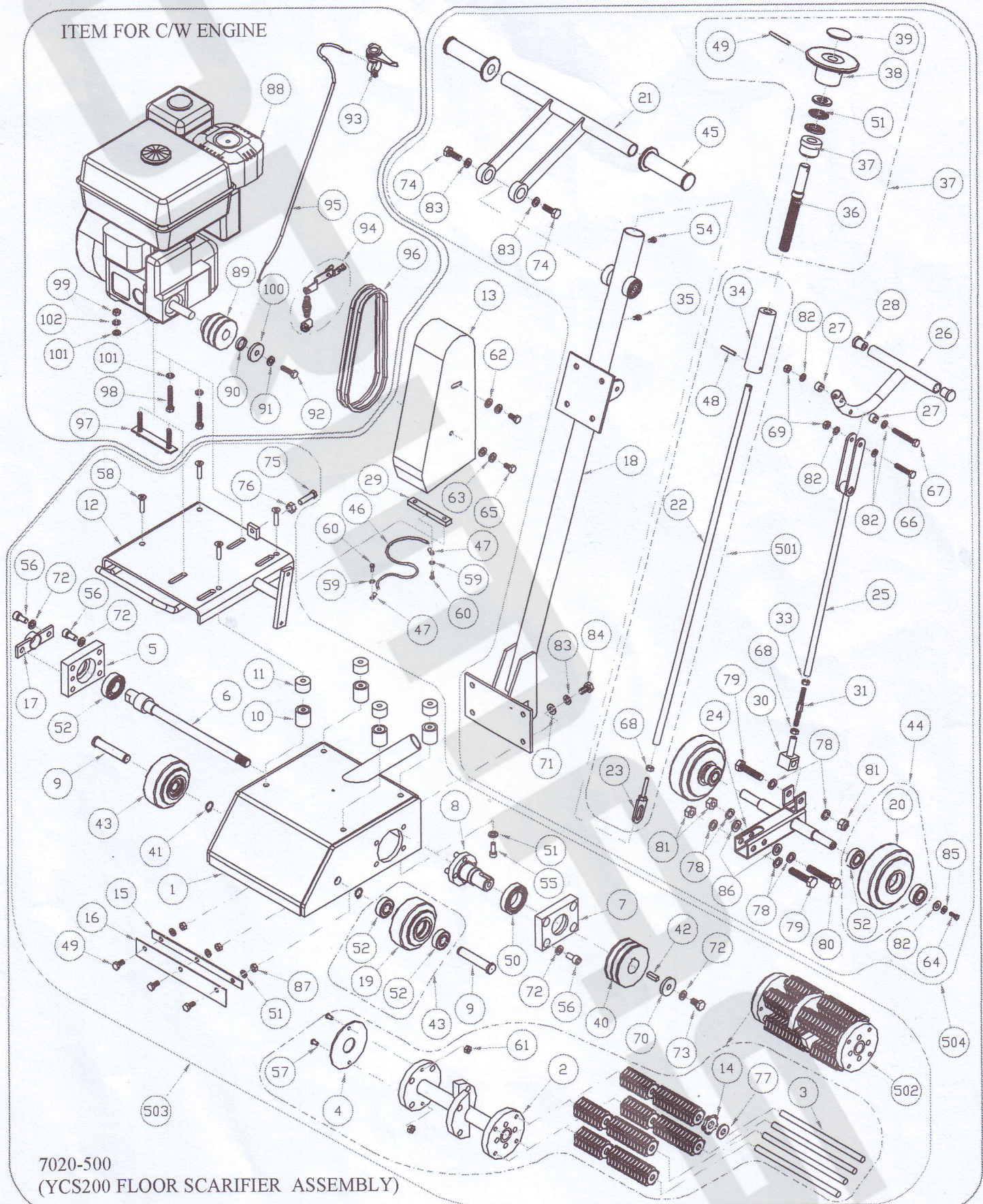


*Koyai*  
06/19/13

To: Export

### PART LIST FOR YCS200 FLOOR SCARIFIER (7020)

ITEM FOR C/W ENGINE



7020-500  
(YCS200 FLOOR SCARIFIER ASSEMBLY)

\*\*Feature and Design are subjected to change without prior notice.

11/01/13  
06/09/13**PART LIST FOR YCS200 FLOOR SCARIFIER (7020)****7020-500 ( YCS200 Floor Scrifier Assembly )**

No.	Part no.	Description	Qty.	Rem.
13	7020-013	Pulley Cover	1	
29	7020-029	Earth Bar	1	
46	4926-11028	Cable	260mm	
47	4927-02002	Insulated Terminal Lug 2.5x5.3M	2	
59	4902-10005	Flat Washer Zp M5	2	
60	4211-05010	Hex Bolt Zp M5x10L	2	

**7020-501 ( Drive Shaft Assembly )**

No.	Part no.	Description	Qty.	Rem.
22	7020-022	Shaft	1	
23	7020-023	Slot Plate	1	
34	7010-027	Silde Block	1	

**7020-502 ( Drum Assembly )**

No.	Part no.	Description	Qty.	Rem.
2	7020-002	Drum	1	
3	7020-003	Shaft	4	
4	7020-004	Cover Plate	1	
14	7020-014	Tungsten Carbide Tipped Cutter	76	

**7020-503 ( Scarifier Assembly )**

No.	Part no.	Description	Qty.	Rem.
1	7020-001	Cover	1	
5	7020-005	Mounting Block, LH	1	
6	7020-006	Driver Shaft	1	
7	7020-007	Mounting Block, RH	1	
8	7020-008	Coupling	1	
9	7020-009	Wheel Pin	2	
10	7020-010	Rubber Mounting	4	
11	7020-011	Mounting Bush	4	
12	7020-012	Engine Base	1	
15	7020-015	Lock Plate	1	
16	7020-016	Rubber Pad	1	
17	7020-017	Protector	1	
502	<b>7020-502</b>	Drum Assembly	1	
43	<b>6300-504</b>	Wheel 4" YRC16	2	
40	4712-09030	Pulley A2x3 1/2", ID30MM	1	

**7020-504 ( Handle Assembly )**

No.	Part no.	Description	Qty.	Rem.
18	7020-018	Handle	1	
21	7020-021	Handle	1	
24	7020-024	Wheel Frame	1	
25	7020-025	Pivot Shaft	1	
26	7020-026	Wheel Lifter	1	
27	7020-027	Spacer	2	
28	7020-028	Rubber Cap	2	
30	7020-030	Joint Block	1	
31	7020-031	Hexagonal fitting	1	
33	7020-033	Hex Nut M8 - (LH)	1	
35	7010-028	Cap Screw	1	
37	<b>7010-500</b>	Hand Wheel Assembly	1	
44	<b>6350-504</b>	Rubber Wheel 5" Assembly	2	
45	4920-00000	Rubber Handle Grip	2	
54	4411-06010	Soc Cap Scr HT12.9 Plain M6x10L	1	
64	4211-08016	Hex Bolt Zp M8x16L	2	

**7010-500 ( Hand Wheel Assembly )**

No.	Part no.	Description	Qty.	Rem.
37	7010-030	Bush	1	
36	7010-029	Silde Bolt	1	
38	7010-059	Hand Wheel	1	

**6300-504 ( Rubber Wheel 4" YRC16 )**

No.	Part no.	Description	Qty.	Rem.
19	6300-107	Whell 4" YRC16	2	
52	4102-06203	Bearing 6203-2RS	4	

\*\*Feature and Design are subjected to change without prior notice.

No.	Part no.	Description	Qty.	Rem.
62	4902-10008	Flat Washer Zp M8	2	
63	4913-10008	Spring Washer Zp M8	2	
65	4211-08020	Hex Bolt Zp M8x20L	2	
503	<b>7020-503</b>	Handle Assembly	1	
504	<b>7020-504</b>	Scarifier Assembly	1	

No.	Part no.	Description	Qty.	Rem.
48	4909-00535	Sel Lock Pin M5x35L	1	
68	4311-00008	Hex Nut Zp M8	1	

No.	Part no.	Description	Qty.	Rem.
57	4436-06025	Soc CSK Cap Scr HT12.9 Zp M6x25L	2	
61	4361-00006	Nylon Nut Zp M6	2	
77	4902131330	Washer 3x12.5x30	84	

No.	Part no.	Description	Qty.	Rem.
41	4900-00017	Circlip A17	2	
42	4906-18725	Key 8x7x25L	1	
49	4211-08020	Hex Bolt Zp M8x20L	3	
50	4002-06007	Bearing 6007	1	
51	4913-10008	Spring Washer Zp M8	7	
53	4002-06025	Bearing 6205-2RS	1	
55	4401-08020	Soc Cap Screw HT12.9 Plain M8x20L	4	
56	4401-10020	Soc Cap Scr HT12.9 Plain M10x20L	10	
58	4436-08035	Soc CSK Cap Scr M8x35L	4	
70	4902161138	Flat Washer 6x10.5x38	2	
72	4913-10010	Spring Washer Zp M10	11	
73	4211-10020	Hex Bolt Zp M10x20L	1	
75	4211-10045	Hex Bolt Zp M10x45L	1	
76	4311-00010	Hex Nut Zp M10	1	
87	4311-00008	Hex Nut Zp M8	3	

No.	Part no.	Description	Qty.	Rem.
66	4211-08040	Hex Bolt Zp M8x40L	1	
67	4211-08060	Hex Bolt Zp M8x60L	1	
68	4311-00008	Hex Nut Zp M8	1	
69	4361-00008	Nylon Lock Nut Zp M8	2	
71	4902-10010	Flat Washer Zp M10	4	
74	4211-10035	Hex Bolt Zp M10x35L	2	
78	4902-10012	Flat Washer Zp M12	6	
79	4211-12055	Hex Bolt Zp M12x55L	2	
80	4211-12070	Hex Bolt Zp M12x70L	1	
81	4361-00012	Nylon Nut Zp M12	3	
82	4902-10008	Flat Washer Zp M8	6	
83	4913-10010	Spring Washer Zp M10	6	
84	4211-10020	Hex Bolt Zp M10x20L	4	
85	4913-10008	Spring Washer Zp M8	2	
86	4902131330	Washer 3x12.5x30	2	
501	<b>7020-501</b>	Drive Shaft Assembly	1	

No.	Part no.	Description	Qty.	Rem.
39	7010-122	Knob Plate	1	
49	4909-00650	Sel Lock Pin M6x50L	1	
51	4100-51204	Thrust Ball Bearing 51204	1	

**6350-504 ( Rubber Wheel 5" Assembly )**

No.	Part no.	Description	Qty.	Rem.
20	6350-108	Whell 5"	2	
52	4102-06203	Bearing 6203-2RS	4	

*1 Copy  
06/09/13*

**PART LIST FOR YCS200 FLOOR SCARIFIER (7020)**

**Items For Bare Unit & C/W Engine**

No.	Part no.	Description	Qty.	Rem.
88	refer table below	Engine	1	
89	refer table part (a)	Engine Pulley	1	
90	refer table part (b)	Engine Collar	1	
91	refer table part (c)	Spring Washer	1	
92	refer table part (d)	Hex Bolt	1	
93	refer table part (e)	Throttle Lever	1	
94	refer table part (f)	Full Back Spring	1	
95	4916-01156	Throttle Cable	1	

No.	Part no.	Description	Qty.	Rem.
96	4918-00028	V-Belt (A-28)	2	
97	6740-008	Engine Bracket Bolt	2	
98	4211-08056	Hex Bolt Zp M8 X 50	2	
99	4311-00008	Hex Nut Zp M8	4	
100	4902161138	Flat Washer Zp 6 X 10.5 X 38	1	
101	4902-10008	Flat Washer Zp M8	6	
102	4913-10008	Spring Washer Zp M8	4	

	Part No	Description	Qty	HONDA ENGINE			ROBIN ENGINE		
				5025,5028,5028A GX160QHP (19.05MM)	5027 GX160SX (20MM)	5135 EX17DU (19.05MM)	5136 EX17 (20MM)	5131/5131C EY20DU (19.05MM)	5132/5132C EY20D (20MM)
(a)	4712-06520	Pulley A2 X 2 1/2" , ID20MM	1		✓		✓		✓
	4712-06519	Pulley A2 X 2 1/2" , ID19.05MM		✓				✓	
(b)	6740-059	Engine Collar	1	✓		✓		✓	
(c)	4913-10008	Spring Washer M8	1	✓	✓	✓	✓		
	4913-10010	Spring Washer M10						✓	✓
(d)	4202-05016	Hex Bolt, UNF 5/16" X 1"L	1	✓		✓			
	4202-06016	Hex Bolt, UNF 3/8" X 1"L						✓	✓
	4211-08025	Hex Bolt M8X25L			✓				
	4211-08030	Hex Bolt M8X30L					✓		
(e)	4917-00010	Throttle lever- L/H (Plastic)	1	✓	✓				
	4917-00020	Throttle lever- R/H (Plastic)				✓	✓	✓	✓
(f)	4921-00000	Pull Back Spring	1	✓	✓				
	4921-00001	Pull Back spring Assembly				✓	✓	✓	✓
	4211-04012	Hex Bolt M4x12		✓	✓				
	4921-00003	Pull Back Nut		✓	✓				
	4361-00006	Nylon Nut M6		✓	✓				

\*\*Feature and Design are subjected to change without prior notice.