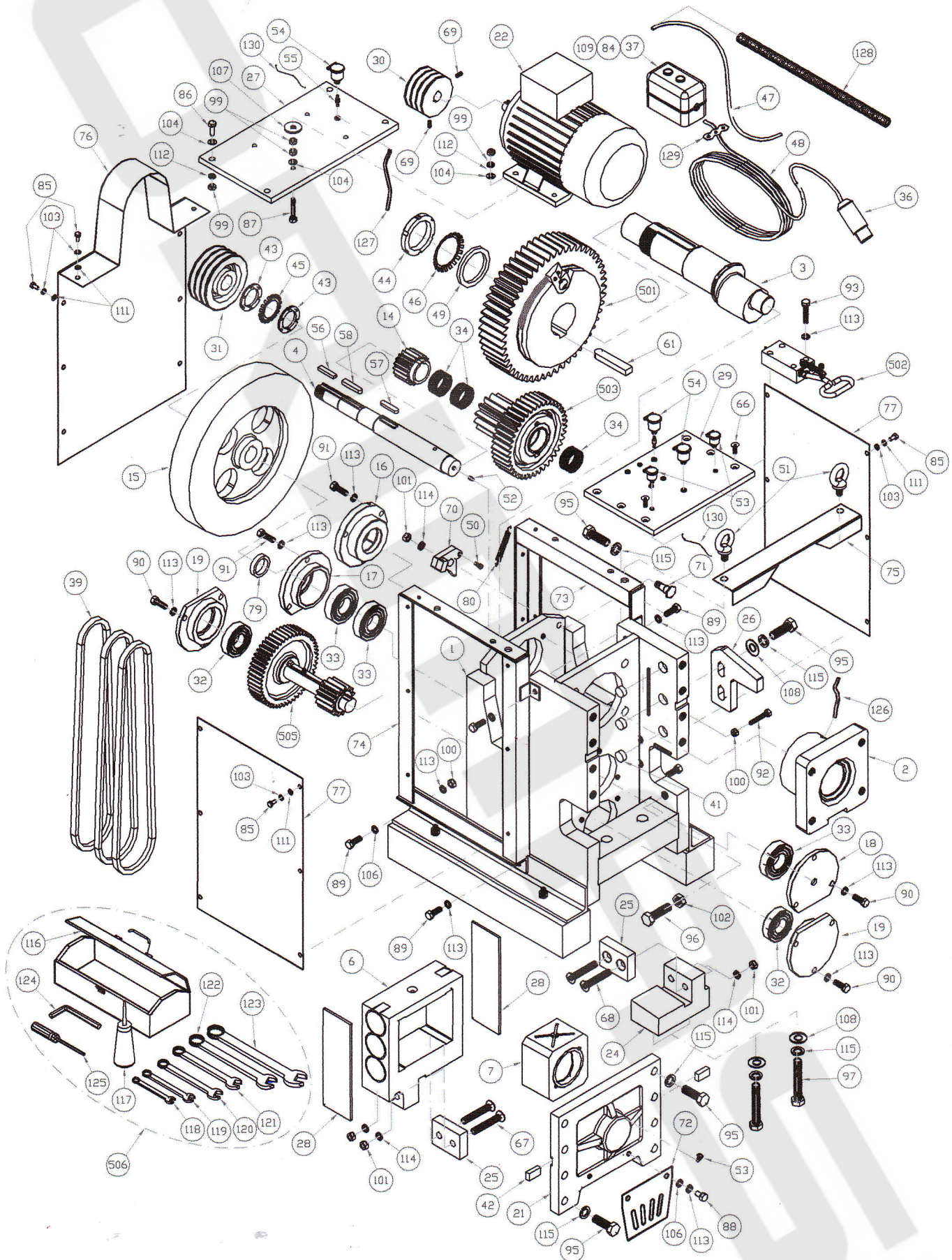


PART LIST FOR VERTICAL BAR CUTTER VBC38(6220)



PART LIST FOR VERTICAL BAR CUTTER VBC38 (6220)

No.	Part no.	Description	Qty.	Rem.
1	6220-001	Frame	1	
2	6220-002	Crank Metal	1	
3	6220-003	Crank Shaft	1	
4	6220-004	Drive Shaft	1	
6	6220-006	Slide Motion	1	
7	6220-007	Square Metal	1	
14	6220-014	Drive Shaft Pinion	1	
15	6220-015	Flywheel	1	
16	6220-016	Crank Shaft Metal	1	
17	6220-017	Back Drive Metal	1	
18	6220-018	Front Drive Metal	1	
19	6220-019	Middle Shaft Metal	2	
21	6220-021	Front Cover	1	
22	5558	BRANCO MOTOR BAL100L1-4 3HP/4P/415V/50HZ	1	
24	6220-024	Lower Blade Base	1	
25	YBC42-32/33	42mm Cutting Blade	2	
26	6220-026	Shock Arbor	1	
27	6220-030	Motor Base For Motor (5557)	1	
28	6220-028	Slider	2	
29	6220-029	Top Plate	1	
30	4723-11428	Pulley B3x4-1/2", 28mm	1	
31	4723-15040	Pulley B3x6", 40mm	1	
32	4004-06308	Bearing 6308ZZ (Grade 1)	2	
33	4004-06309	Bearing 6309ZZ (Grade 1)	3	
34	4020-506225	Needle Bearing TAF506225 (Grade 1)	3	
36	4927-01014	4 Pin x 32A Plug	1	
37	4927-05030	Push Botton Switch	1	
39	4918-100061	V-Belt (B-61)	3	
41	6220-041	Slider Presser	3	
42	6220-042	Slide Stopper	2	
43	4530-00008	Lock Nut AN08	2	
44	4530-00017	Lock Nut AN17	1	
45	4902-17008	Lock Washer AW08	1	
46	4902-17017	Lock Washer AW17	1	
47	4926-14110	100/0076x4C Flexible Cable	900mm	
48	4926-14110	100/0076x4C Flexible Cable	3500mm	
49	6220-049	Collar	1	
50	6220-050	Spring Hook	1	
51	4540-16027	Lifting Eye Bolt STL ZP M16x27	2	
52	4907-50002	Grease Nipple Straight 1/8"-28BSP	1	
53	6220-059	Oil Cap M10X1.0~RH	3	
54	6220-060	Oil Cap M14X1.5~RH	3	
55	6220-061	Hose Extension Joint	2	
56	4906-11255	Key 12x8x55L	1	
57	4906-11260	Key 12x8x60L, Round	1	
58	4906-11265	Key 12x10x65L, Round	1	
61	4906-124115	Key 24x16x115L, Round	1	
66	4431-10025	Soc CSK Cap Scr HT12.9 Plain M10x25L	6	
67	4431-16090	Soc CSK Cap Scr HT12.9 Plain M16x90L	2	
68	4431-16100	Soc CSK Cap Scr HT12.9 Plain M16x100L	2	
69	4451-06016	Soc Hd Set Scr STL Plain M8x16L	2	

No.	Part no.	Description	Qty.	Rem.
70	6220-070	Lock Holder	1	
71	6220-071	Pin	1	
72	6220-072	Protector	1	
73	6220-073	Right Frame	1	
74	6220-074	Left Frame	1	
75	6220-075	Front Cover	1	
76	6220-076	Pulley Cover	1	
77	6220-077	Side Cover	2	
79	6220-079	Collar	1	
80	6220-080	Lock Holder Spring	1	
84	4211-05010	Hex Bolt HT8.8 Zinc M5x10L	2	
85	4211-08016	Hex Bolt HT8.8 Zinc M8x16L	20	
86	4201-10030	Hex Bolt HT8.8 Plain M10x30L	4	
87	4211910080	Hex Bolt HT8.8 Zinc M10x80F	4	
88	4201-12020	Hex Bolt HT8.8 Plain M12x20L	2	
90	4205-12035	Hex Bolt HT10.9 STL Plain M12x35L	9	
91	4205-12040	Hex Bolt HT10.9 STL Plain M12x40L	6	
92	4201912050	Hex Bolt HT8.8 Plain M12x50F	3	
93	4211-12055	Hex Bolt HT8.8 ZP M12x55L	4	
95	4205920060	Hex Bolt HT10.9 STL Plain M20x60F	14	
96	4205920070	Hex Bolt HT8.8 Plain M20x70F	1	
97	4201-20120	Hex Bolt HT8.8 Plain M20x120L	2	
89	4201912035	Hex Bolt HT8.8 Plain M12x35LF	6	
99	4311-00010	Hex Nut HT ZP M10	16	
100	4301-00012	Hex Nut HT Plain M12	9	
101	4301-00016	Hex Nut HT Plain M16	5	
102	4301-00020	Hex Nut HT Plain M20	1	
103	4902-10008	Flat Washer ZP M8	20	
104	4902-00010	Flat Washer ZP M10	8	
106	4902-00012	Flat Washer STL Plain M12	8	
107	4902151345	Flat Washer STL ZP 4.5x13x45	4	
108	6220-083	Flat Washer	4	
109	4913-10005	Spring Washer STL ZP M5	2	
111	4913-10008	Spring Washer STL ZP M8	20	
112	4913-10010	Spring Washer STL ZP M10	8	
113	4913-00012	Spring Washer STL Plain M12	31	
114	4913-00016	Spring Washer STL ZP M16	5	
115	4913-00020	Spring Washer STL Plain M20	16	
124	6220-122	Allen Key(Hexagon Key) 10mm	1	
125	6220-123	Standard Screw Driver Phili (10mm)	1	
126	4933-00830	5/16" Oil Hose	160mm	
127	4933-00830	5/16" Oil Hose	300mm	
128	4933-02040	20mm Flexible Conduit	700mm	
129	6220-086	Bracket Clip	100mm	
130	6220-087	Oil String	5	
501	6220-501	Clutch Gear Assembly	1	
502	6220-502	Dragging Assembly	1	
503	6220-503	Drive Shaft Assembly	1	
505	6220-505	Bottom Gear Assembly	1	
506	6220-506	Tool Box With Tools	1	

PART LIST FOR VERTICAL BAR CUTTER VBC38 (6220)

501. CLUTCH GEAR ASSEMBLY (6220-501)				
No.	Part no.	Description	Qty.	Rem.
8	6220-008	Clutch Disk	1	
9	6220-009	Clutch Gear	1	
20	6220-020	Clutch Cover	1	
50	6220-050	Spring Hook	2	
82	6220-082	Clutch Spring	1	
89	4201912035	Hex Bolt HT8.8 Plain M12x35LF	3	
113	4913-00012	Spring Washer STL Plain M12	3	

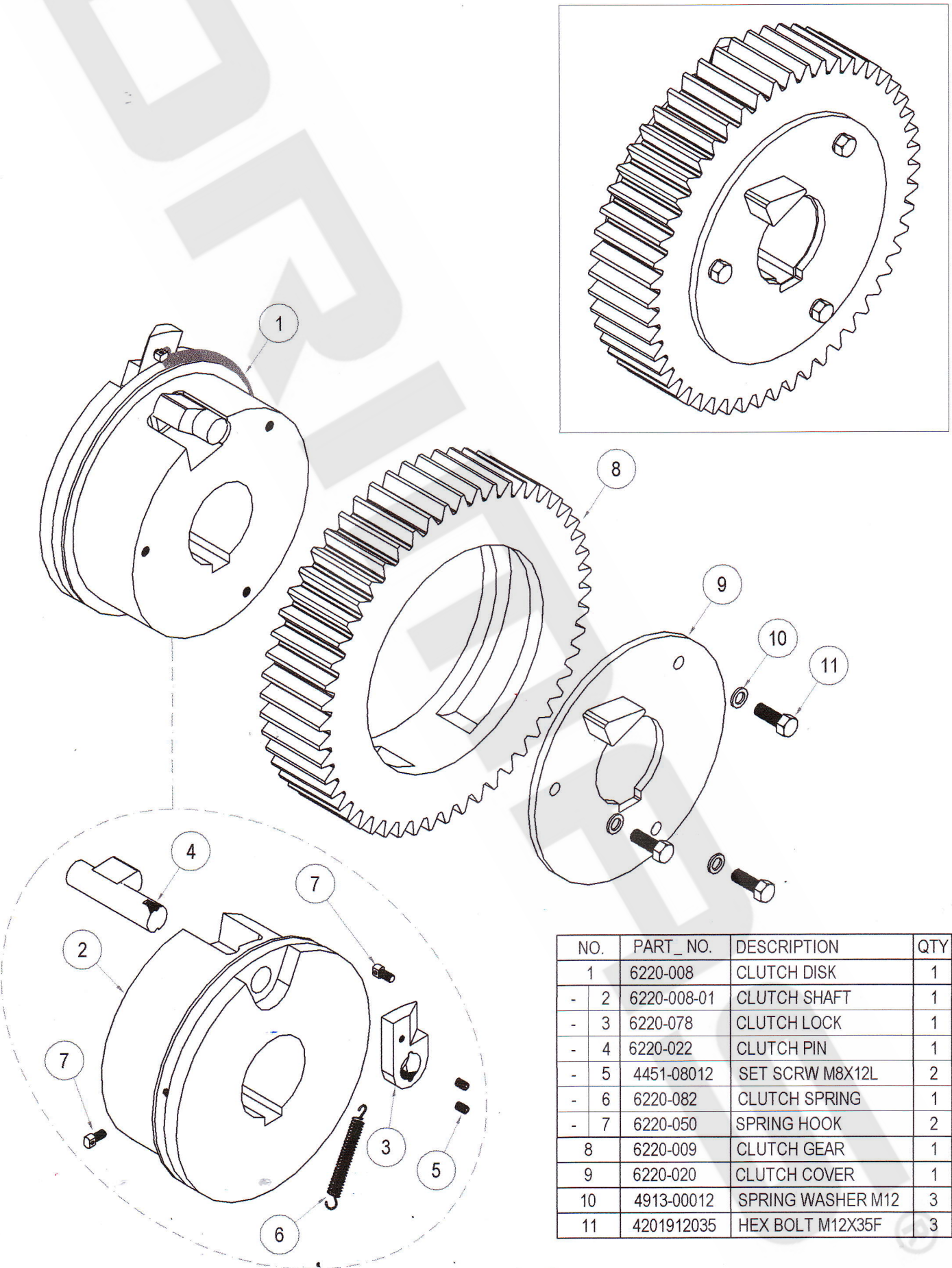
505. BOTTOM GEAR ASSEMBLY (6220-505)				
No.	Part no.	Description	Qty.	Rem.
5	6220-005	Middle Shaft	1	
12	6220-012	Middle Shaft Pinion	1	
13	6220-013	Middle Shaft Gear	1	
60	4906-11210	Key 12x8x106L	1	
62	4906-31252	Gib Head Key 12x8x52L	1	
63	4906-31272	Gib Head Key 12x8x72L	1	
64	4401-06016	Cap Screw (BLK) M.Coarse M6x16	1	
110	4913-10006	Spring Washer STL ZP M6	1	

502. DRAGGING ASSEMBLY (6220-502)				
No.	Part no.	Description	Qty.	Rem.
23	6220-023	Dragging Lever	1	
38	6220-038	Dragging Guide	1	
40	6220-040	Dragging Handle	1	
65	4401-08030	Soc Cap Scr HT12.9 Plain M8x30L	1	
81	6220-081	Dragging Spring	1	
85	4211-08016	Hex Bolt HT8.8 Zinc M8x16L	2	
98	4301-00008	Hex Nut HT Plain M8	1	
111	4913-10008	Spring Washer STL ZP M8	2	

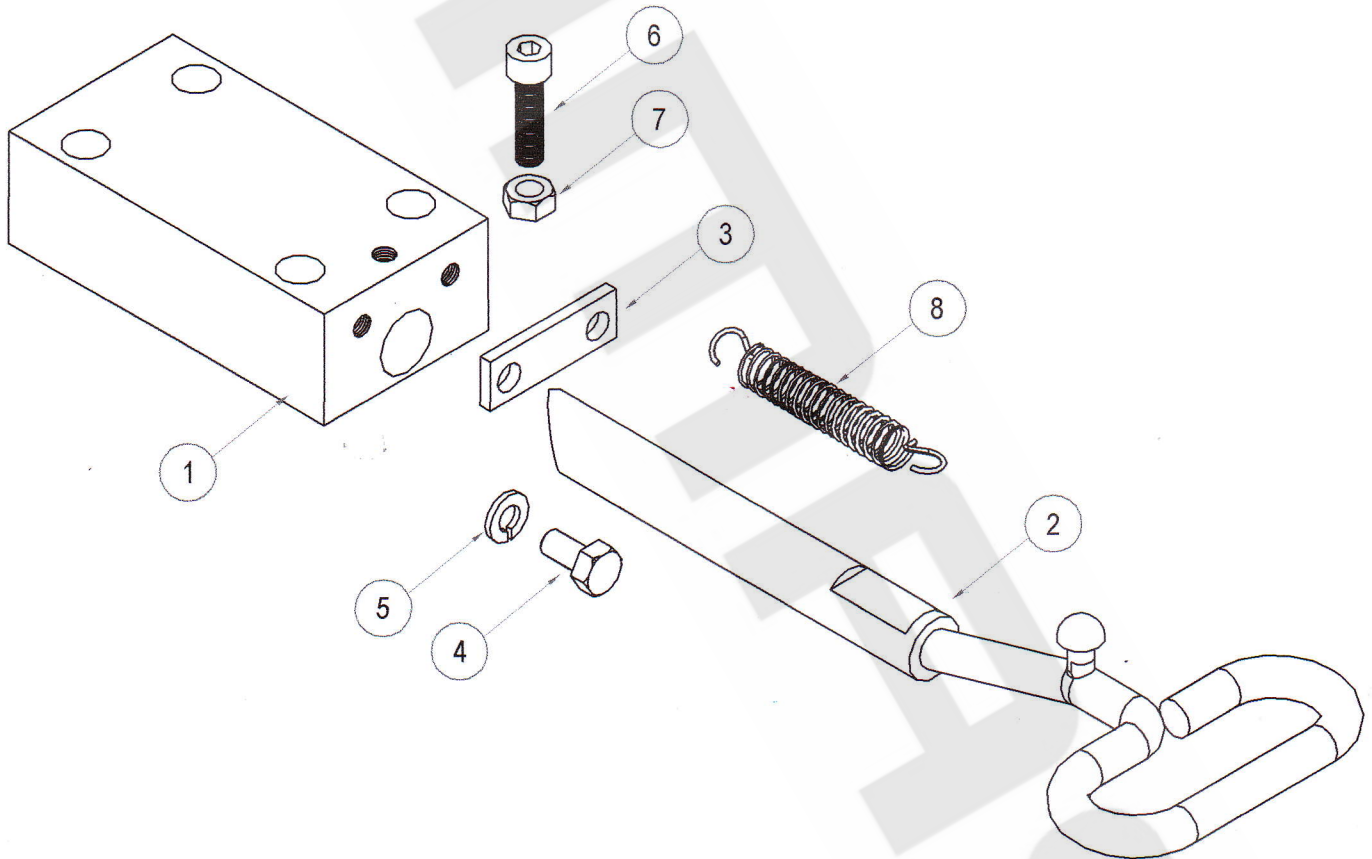
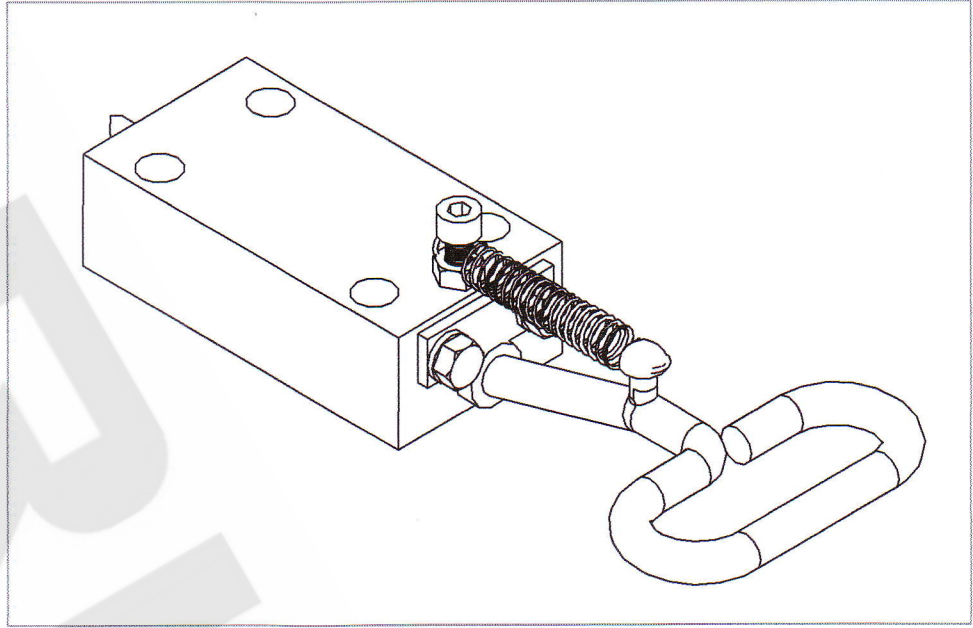
506. TOOL BOX WITH TOOLS (6220-506)				
No.	Part no.	Description	Qty.	Rem.
116	6220-114	Tools Box 303L x 130W x 98H	1	
117	6220-115	Oil Tank 200ml (Plastic)	1	
118	6220-116	Combination Spanner 10mm (Alloy Steel)	1	
119	6220-117	Combination Spanner 13mm (Alloy Steel)	1	
120	6220-118	Combination Spanner 17mm (Alloy Steel)	1	
121	6220-119	Combination Spanner 19mm (Alloy Steel)	1	
122	6220-120	Combination Spanner 24mm (Alloy Steel)	1	
123	6220-121	Combination Spanner 30mm (Alloy Steel)	1	

503. DRIVE SHAFT ASSEMBLY (6220-503)				
No.	Part no.	Description	Qty.	Rem.
10	6220-010	Clutch Pinion	1	
11	6220-011	Drive Shaft Gear	1	
59	4906-11555	Key 15x10x55L, Round	1	
83	4451-12025	Set Screw (Blk) M.Coarse M12x25	1	

CLUTCH GEAR ASSEMBLY (6220-501)

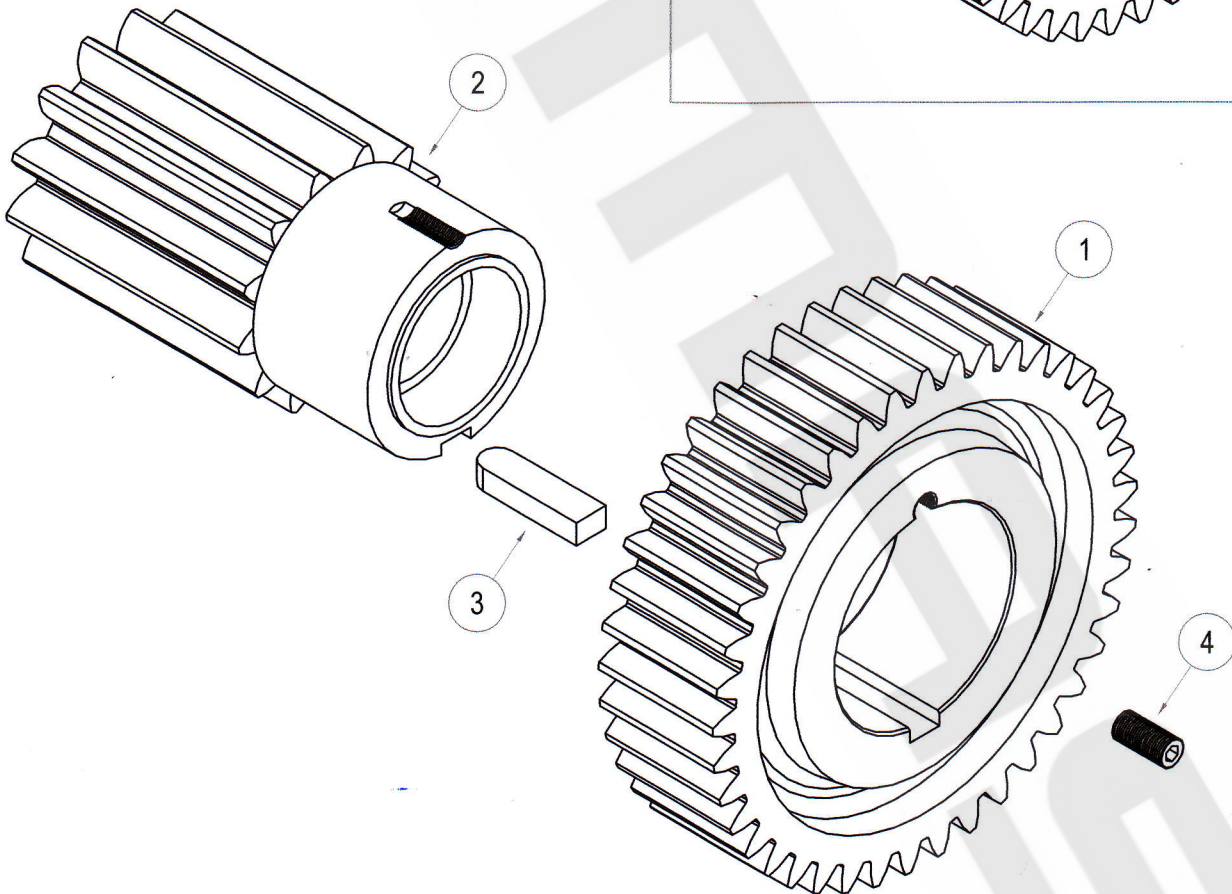
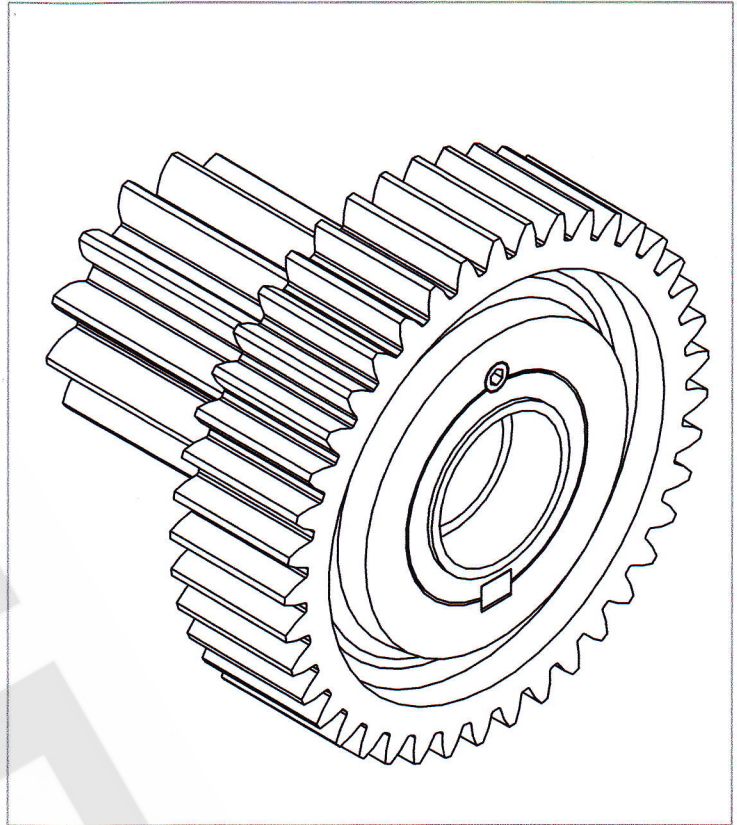


NO.	PART_NO.	DESCRIPTION	QTY	
1	6220-008	CLUTCH DISK	1	
-	2	6220-008-01	CLUTCH SHAFT	1
-	3	6220-078	CLUTCH LOCK	1
-	4	6220-022	CLUTCH PIN	1
-	5	4451-08012	SET SCRW M8X12L	2
-	6	6220-082	CLUTCH SPRING	1
-	7	6220-050	SPRING HOOK	2
8	6220-009	CLUTCH GEAR	1	
9	6220-020	CLUTCH COVER	1	
10	4913-00012	SPRING WASHER M12	3	
11	4201912035	HEX BOLT M12X35F	3	

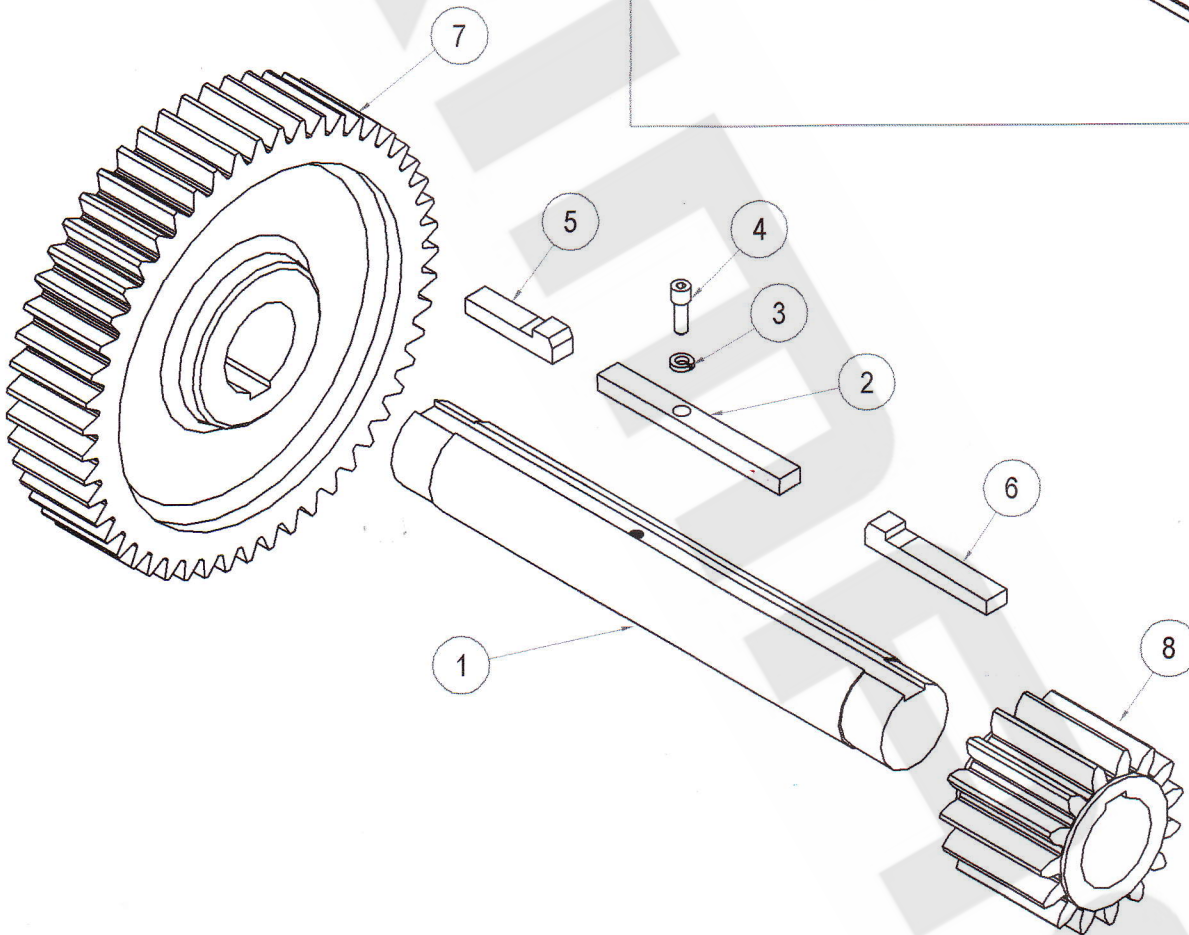
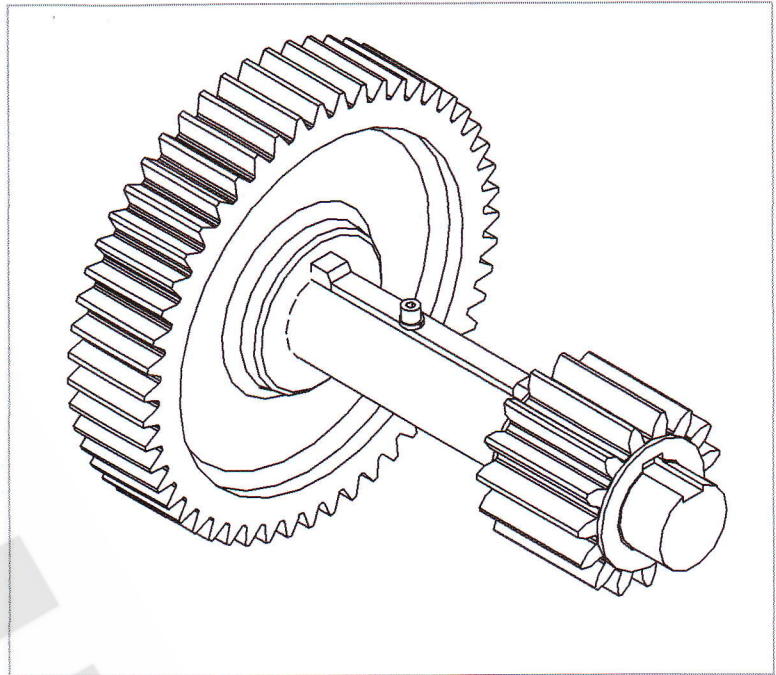
DRAGGING ASSEMBLY (6220-502)

NO.	PART_NO.	DESCRIPTION	QTY
1	6220-023	DRAGGING LEVER	1
2	6220-040	DRAGGING HANDLE	1
3	6220-038	DRAGGING GUIDE	1
4	4211-08016	HEX BOLT M8X16L	2
5	4913-10008	SPRING WASHER M8	2
6	4401-08030	SOC CAP SCR M8X30L	1
7	4301-00008	HEX NUT M8	1
8	6220-081	DRAGGING SPRING	1

DRIVE SHAFT GEAR ASSEMBLY (6220-503)



NO.	PART_NO.	DESCRIPTION	QTY
1	6220-011	DRIVE SHAFT GEAR	1
2	6220-010	CLUTCH PINION	1
3	4906-11555	KEY 15X10X55L,ROUND	1
4	4451-12025	SET SCREW, M12X25	1

BOTTOM GEAR ASSEMBLY (6220-505)

NO.	PART_NO.	DESCRIPTION	QTY
1	6220-005	MIDDLE SHAFT	1
2	4906-112106	KEY 12X8X106L	1
3	4913-10006	SPRING WASHER M6	1
4	4401-06016	CAP SCREW M6X16	1
5	4906-31252	GIB HEAD KEY 12X8X52	1
6	4906-31272	GIB HEAD KEY 12X8X72	1
7	6220-013	MIDDLE SHAFT GEAR	1
8	6220-012	MIDDLE SHAFT PINION	1